

Product datasheet for **TA342790**

Adenosine A1 Receptor (ADORA1) Rabbit Polyclonal Antibody

Product data:

Product Type:	Primary Antibodies
Applications:	WB
Recommended Dilution:	WB
Reactivity:	Human
Host:	Rabbit
Isotype:	IgG
Clonality:	Polyclonal
Immunogen:	The immunogen for anti-ADORA1 antibody: synthetic peptide directed towards the C terminal of human ADORA1. Synthetic peptide located within the following region: VLPPLLLMVLIIYLEVLYLIRKQLNKKVSASSGDPQKYGKELKIAKSLAL
Formulation:	Liquid. Purified antibody supplied in 1x PBS buffer with 0.09% (w/v) sodium azide and 2% sucrose. <i>Note that this product is shipped as lyophilized powder to China customers.</i>
Conjugation:	Unconjugated
Storage:	Store at -20°C as received.
Stability:	Stable for 12 months from date of receipt.
Predicted Protein Size:	36 kDa
Gene Name:	adenosine A1 receptor
Database Link:	NP_000665 Entrez Gene 134 Human P30542
Background:	The protein encoded by this gene is an adenosine receptor that belongs to the G-protein coupled receptor 1 family. There are 3 types of adenosine receptors, each with a specific pattern of ligand binding and tissue distribution, and together they regulate a diverse set of physiologic functions. The type A1 receptors inhibit adenylyl cyclase, and play a role in the fertilization process. Animal studies also suggest a role for A1 receptors in kidney function and ethanol intoxication. Transcript variants with alternative splicing in the 5' UTR have been found for this gene.



[View online »](#)

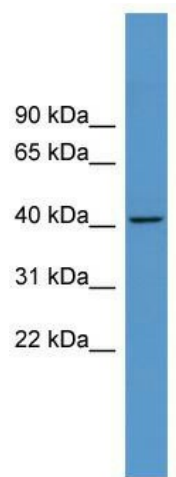
Synonyms: RDC7

Note: Immunogen Sequence Homology: Dog: 100%; Pig: 100%; Rat: 100%; Horse: 100%; Human: 100%; Mouse: 100%; Bovine: 100%; Guinea pig: 100%; Rabbit: 86%

Protein Families: Druggable Genome, GPCR, Transmembrane

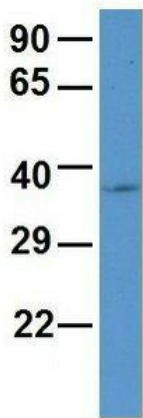
Protein Pathways: Neuroactive ligand-receptor interaction

Product images:



WB Suggested Anti-ADORA1 Antibody Titration: 0.2-1 ug/ml; ELISA Titer: 1:62500; Positive Control: Human Liver

ADORA1



Rabbit Anti-ADORA1
 Sample Type: Human Fetal Brain
 Antibody Concentration: 1ug/mL

Host: Rabbit; Target Name: ADORA1; Sample Tissue: Human Fetal Brain; Antibody Dilution: 1.0 ug/ml