

## Product datasheet for **TA342788**

### gamma Adducin (ADD3) Rabbit Polyclonal Antibody

#### Product data:

Product Type:	Primary Antibodies
Applications:	IF, WB
Recommended Dilution:	WB, IF
Reactivity:	Human, Mouse
Host:	Rabbit
Isotype:	IgG
Clonality:	Polyclonal
Immunogen:	The immunogen for anti-ADD3 antibody: synthetic peptide directed towards the middle region of human ADD3. Synthetic peptide located within the following region: AYYDYQGSLEEQEERIQLQKVLGPSCVKLVLRNHGVVALGETLEEFHYI
Formulation:	Liquid. Purified antibody supplied in 1x PBS buffer with 0.09% (w/v) sodium azide and 2% sucrose. <i>Note that this product is shipped as lyophilized powder to China customers.</i>
Conjugation:	Unconjugated
Storage:	Store at -20°C as received.
Stability:	Stable for 12 months from date of receipt.
Predicted Protein Size:	78 kDa
Gene Name:	adducin 3
Database Link:	<a href="#">NP_058432</a> <a href="#">Entrez Gene 27360 Mouse</a> <a href="#">Entrez Gene 120 Human</a> <a href="#">Q9UEY8</a>
Background:	Adducins are heteromeric proteins composed of different subunits referred to as adducin alpha, beta and gamma. The three subunits are encoded by distinct genes and belong to a family of membrane skeletal proteins involved in the assembly of spectrin-actin network in erythrocytes and at sites of cell-cell contact in epithelial tissues. Polymorphisms resulting in amino acid substitutions in these two subunits have been associated with the regulation of blood pressure in an animal model of hypertension. Heterodimers consisting of alpha and gamma subunits have also been described. Structurally, each subunit is comprised of two distinct domains.

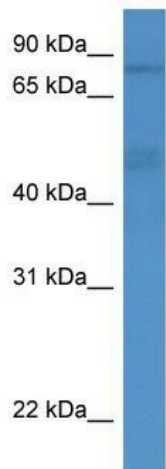


[View online »](#)

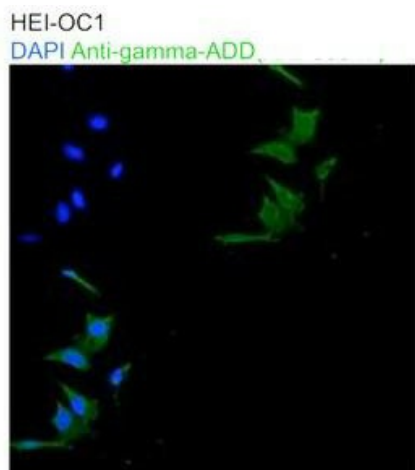
**Synonyms:** ADDL

**Note:** Immunogen Sequence Homology: Human: 100%; Pig: 93%; Rat: 93%; Horse: 93%; Guinea pig: 93%; Dog: 86%; Bovine: 86%; Rabbit: 86%; Mouse: 79%; Zebrafish: 79%

**Product images:**



WB Suggested Anti-ADD3 Antibody Titration: 0.2-1 ug/ml; ELISA Titer: 1:62500; Positive Control: PANC1 cell lysate ADD3 is strongly supported by BioGPS gene expression data to be expressed in Human PANC1 cells



mouse HEI-OCI auditory