

Product datasheet for **TA342784**

CDKL5 Rabbit Polyclonal Antibody

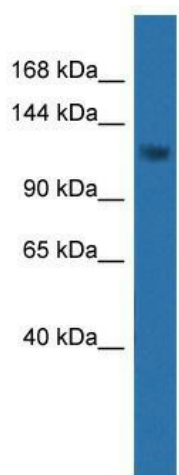
Product data:

Product Type:	Primary Antibodies
Applications:	WB
Recommended Dilution:	WB
Reactivity:	Human
Host:	Rabbit
Isotype:	IgG
Clonality:	Polyclonal
Immunogen:	The immunogen for anti-CDKL5 antibody: synthetic peptide directed towards the C terminal of human CDKL5. Synthetic peptide located within the following region: SQASGGSSNIRQEPAPKGRPALQLPDGGCDGRRQRHHSQPQDRRFMLRTT
Formulation:	Liquid. Purified antibody supplied in 1x PBS buffer with 0.09% (w/v) sodium azide and 2% sucrose. <i>Note that this product is shipped as lyophilized powder to China customers.</i>
Conjugation:	Unconjugated
Storage:	Store at -20°C as received.
Stability:	Stable for 12 months from date of receipt.
Predicted Protein Size:	115 kDa
Gene Name:	cyclin dependent kinase like 5
Database Link:	NP_003150 Entrez Gene 6792 Human O76039
Background:	CDKL5 is a member of Ser/Thr protein kinase family. This protein is a phosphorylated protein with protein kinase activity. Mutations in this CDKL5 gene have been associated with X-linked infantile spasm syndrome (ISSX), also known as X-linked West syndrome, and Rett syndrome (RTT).
Synonyms:	EIEE2; ISSX; STK9
Note:	Immunogen Sequence Homology: Human: 100%
Protein Families:	Druggable Genome, Protein Kinase



[View online »](#)

Product images:



WB Suggested Anti-CDKL5 Antibody Titration: 0.2-1 ug/ml; ELISA Titer: 1:62500; Positive Control: 721_B cell lysate CDKL5 is strongly supported by BioGPS gene expression data to be expressed in Human 721_B cells