

## Product datasheet for **TA342783**

### **BASP1 Rabbit Polyclonal Antibody**

#### **Product data:**

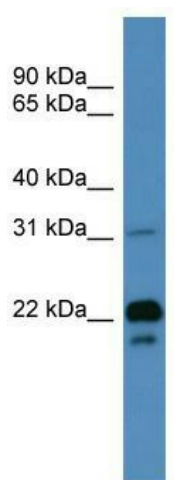
Product Type:	Primary Antibodies
Applications:	WB
Recommended Dilution:	WB
Reactivity:	Human
Host:	Rabbit
Isotype:	IgG
Clonality:	Polyclonal
Immunogen:	The immunogen for anti-BASP1 antibody: synthetic peptide directed towards the N terminal of human BASP1. Synthetic peptide located within the following region: AKEGKEKPDQDAEGKAEKEGEKDAAAAKEEAPKAEPEKTEGAAEAKAEP
Formulation:	Liquid. Purified antibody supplied in 1x PBS buffer with 0.09% (w/v) sodium azide and 2% sucrose. <i>Note that this product is shipped as lyophilized powder to China customers.</i>
Conjugation:	Unconjugated
Storage:	Store at -20°C as received.
Stability:	Stable for 12 months from date of receipt.
Predicted Protein Size:	23 kDa
Gene Name:	brain abundant membrane attached signal protein 1
Database Link:	<a href="#">NP_006308</a> <a href="#">Entrez Gene 10409 Human P80723</a>
Background:	This gene encodes a membrane bound protein with several transient phosphorylation sites and PEST motifs. Conservation of proteins with PEST sequences among different species supports their functional significance. PEST sequences typically occur in proteins with high turnover rates. Immunological characteristics of this protein are species specific. This protein also undergoes N-terminal myristoylation.
Synonyms:	CAP-23; CAP23; NAP-22; NAP22



[View online »](#)

**Note:** Immunogen Sequence Homology: Pig: 100%; Rat: 100%; Human: 100%; Rabbit: 100%; Guinea pig: 100%; Mouse: 93%; Dog: 86%; Horse: 86%; Bovine: 86%; Yeast: 85%

**Product images:**



WB Suggested Anti-BASP1 Antibody Titration:  
0.125 ug/ml; ELISA Titer: 1:62500; Positive  
Control: Human Muscle