

## Product datasheet for **TA342781**

### MRGX1 (MRGPRX1) Rabbit Polyclonal Antibody

#### Product data:

Product Type:	Primary Antibodies
Applications:	WB
Recommended Dilution:	WB
Reactivity:	Human
Host:	Rabbit
Isotype:	IgG
Clonality:	Polyclonal
Immunogen:	The immunogen for anti-MRGPRX1 antibody is: synthetic peptide directed towards the C-terminal region of Human MRGPRX1. Synthetic peptide located within the following region: FLSALNSSANPIIYFFVGSFRQRQNRQNLKLVLRALQDASEVDEGGGQL
Formulation:	Liquid. Purified antibody supplied in 1x PBS buffer with 0.09% (w/v) sodium azide and 2% sucrose. <i>Note that this product is shipped as lyophilized powder to China customers.</i>
Conjugation:	Unconjugated
Storage:	Store at -20°C as received.
Stability:	Stable for 12 months from date of receipt.
Predicted Protein Size:	36 kDa
Gene Name:	MAS related GPR family member X1
Database Link:	<a href="#">NP_671732</a> <a href="#">Entrez Gene 259249 Human Q96LB2</a>
Background:	MRGPRX1 is an orphan receptor. MRGPRX1 is probably involved in the function of nociceptive neurons. It may regulate nociceptor function and/or development, including the sensation or modulation of pain. MRGPRX1 is potently activated by enkephalins including BAM22 (bovine adrenal medulla peptide 22) and BAM (8-22). BAM22 is the most potent compound and evoked a large and dose-dependent release of intracellular calcium in stably transfected cells. G(alpha)q proteins are involved in the calcium-signaling pathway. MRGPRX1 is activated by the antimalarial drug, chloroquine and may mediate chloroquine-induced itch, in an histamine-independent manner.



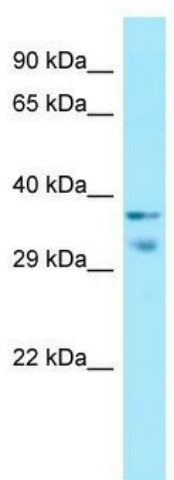
[View online »](#)

**Synonyms:** GPCR; MGRG2; MRGX1; SNSR4

**Note:** Immunogen Sequence Homology: Human: 100%

**Protein Families:** Druggable Genome, GPCR, Transmembrane

**Product images:**



WB Suggested Anti-MRGPRX1 Antibody; Titration: 1.0 ug/ml; Positive Control: Fetal Small Intestine