

## Product datasheet for **TA342779**

### MRGX3 (MRGPRX3) Rabbit Polyclonal Antibody

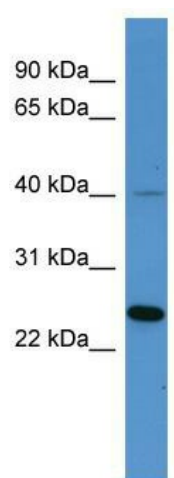
#### Product data:

Product Type:	Primary Antibodies
Applications:	WB
Recommended Dilution:	WB
Reactivity:	Human
Host:	Rabbit
Isotype:	IgG
Clonality:	Polyclonal
Immunogen:	The immunogen for anti-MRGPRX3 antibody: synthetic peptide directed towards the C terminal of human MRGPRX3. Synthetic peptide located within the following region: LDWKVLFCHVHLVSIFLSALNSSANPIIYFFVGSFRQRQNRQNLKLVLR
Formulation:	Liquid. Purified antibody supplied in 1x PBS buffer with 0.09% (w/v) sodium azide and 2% sucrose.
Conjugation:	Unconjugated
Storage:	Store at -20°C as received.
Stability:	Stable for 12 months from date of receipt.
Predicted Protein Size:	36 kDa
Gene Name:	MAS related GPR family member X3
Database Link:	<a href="#">NP_473372</a> <a href="#">Entrez Gene 117195 Human</a> <a href="#">Q96LB0</a>
Background:	This gene encodes a member of the mas-related/sensory neuron specific subfamily of G protein coupled receptors. The encoded protein may be involved in sensory neuron regulation and in the modulation of pain.
Synonyms:	GPCR; MRGX3; SNSR1; SNSR2
Note:	Immunogen Sequence Homology: Human: 100%
Protein Families:	Druggable Genome, GPCR, Transmembrane



[View online »](#)

## Product images:



WB Suggested Anti-MRGPRX3 Antibody Titration:  
0.2-1 ug/ml; ELISA Titer: 1:62500; Positive Control:  
Hela cell lysate