

## Product datasheet for **TA342778**

### MRGPRF Rabbit Polyclonal Antibody

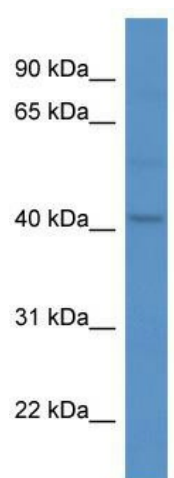
#### Product data:

Product Type:	Primary Antibodies
Applications:	WB
Recommended Dilution:	WB
Reactivity:	Human
Host:	Rabbit
Isotype:	IgG
Clonality:	Polyclonal
Immunogen:	The immunogen for anti-MRGPRF antibody: synthetic peptide directed towards the C terminal of human MRGPRF. Synthetic peptide located within the following region: PCLALILHVECRARRRQRS AKLNHVILAMVSVFLVSSIYLGIDWFLFWVF
Formulation:	Liquid. Purified antibody supplied in 1x PBS buffer with 0.09% (w/v) sodium azide and 2% sucrose. <i>Note that this product is shipped as lyophilized powder to China customers.</i>
Conjugation:	Unconjugated
Storage:	Store at -20°C as received.
Stability:	Stable for 12 months from date of receipt.
Predicted Protein Size:	38 kDa
Gene Name:	MAS related GPR family member F
Database Link:	<a href="#">NP_659452</a> <a href="#">Entrez Gene 116535 Human</a> <a href="#">Q96AM1</a>
Background:	MRGPRF is an orphan receptor. It may bind to a neuropeptide and may regulate nociceptor function and/or development, including the sensation or modulation of pain.
Synonyms:	GPR140; GPR168; MRGF; RTA
Note:	Immunogen Sequence Homology: Dog: 100%; Rat: 100%; Horse: 100%; Human: 100%; Mouse: 100%; Bovine: 100%; Pig: 93%; Guinea pig: 93%



[View online »](#)

## Product images:



WB Suggested Anti-MRGPRF Antibody; Titration:  
1.0 ug/ml; Positive Control: NCI-H226 Whole Cell