

Product datasheet for **TA342776**

OPN1SW Rabbit Polyclonal Antibody

Product data:

Product Type:	Primary Antibodies
Applications:	WB
Recommended Dilution:	WB
Reactivity:	Human
Host:	Rabbit
Isotype:	IgG
Clonality:	Polyclonal
Immunogen:	The immunogen for anti-OPN1SW antibody: synthetic peptide directed towards the C terminal of human OPN1SW. Synthetic peptide located within the following region: SESYTWFLFIFCFIVPLSLICFSYQLLRALKAVAAQQQESATTQKAERE
Formulation:	Liquid. Purified antibody supplied in 1x PBS buffer with 0.09% (w/v) sodium azide and 2% sucrose. <i>Note that this product is shipped as lyophilized powder to China customers.</i>
Conjugation:	Unconjugated
Storage:	Store at -20°C as received.
Stability:	Stable for 12 months from date of receipt.
Predicted Protein Size:	39 kDa
Gene Name:	opsin 1 (cone pigments), short-wave-sensitive
Database Link:	NP_001699 Entrez Gene 611 Human P03999
Background:	This gene belongs to the G-protein coupled receptor 1 family, opsin subfamily. It encodes the blue cone pigment gene which is one of three types of cone photoreceptors responsible for normal color vision. Defects in this gene are the cause of tritan color blindness (tritanopia). Affected individuals lack blue and yellow sensory mechanisms while retaining those for red and green. Defective blue vision is characteristic.
Synonyms:	BCP; BOP; CBT

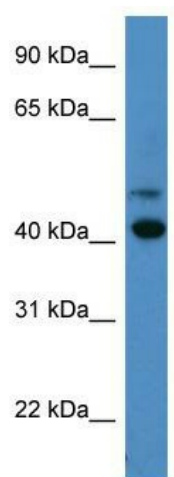


[View online »](#)

Note: Immunogen Sequence Homology: Pig: 100%; Rat: 100%; Horse: 100%; Human: 100%; Mouse: 100%; Rabbit: 100%; Guinea pig: 100%; Dog: 93%

Protein Families: Druggable Genome, Transmembrane

Product images:



WB Suggested Anti-OPN1SW Antibody Titration:
0.2-1 ug/ml; ELISA Titer: 1:312500; Positive
Control: A549 cell lysate OPN1SW is supported by
BioGPS gene expression data to be expressed in
A549