

Product datasheet for **TA342775**

Rhodopsin (RHO) Rabbit Polyclonal Antibody

Product data:

Product Type:	Primary Antibodies
Applications:	WB
Recommended Dilution:	WB
Reactivity:	Human
Host:	Rabbit
Isotype:	IgG
Clonality:	Polyclonal
Immunogen:	The immunogen for anti-RHO antibody: synthetic peptide directed towards the C terminal of human RHO. Synthetic peptide located within the following region: AFFAKSAAIYNPVIYIMMNKQFRNCMLTICCGKNPLGDDEASATVSKTE
Formulation:	Liquid. Purified antibody supplied in 1x PBS buffer with 0.09% (w/v) sodium azide and 2% sucrose. <i>Note that this product is shipped as lyophilized powder to China customers.</i>
Conjugation:	Unconjugated
Storage:	Store at -20°C as received.
Stability:	Stable for 12 months from date of receipt.
Predicted Protein Size:	39 kDa
Gene Name:	rhodopsin
Database Link:	NP_000530 Entrez Gene 6010 Human P08100
Background:	Retinitis pigmentosa is an inherited progressive disease which is a major cause of blindness in western communities. It can be inherited as an autosomal dominant, autosomal recessive, or X-linked recessive disorder. In the autosomal dominant form, which comprises about 25% of total cases, approximately 30% of families have mutations in the gene encoding the rod photoreceptor-specific protein rhodopsin. This is the transmembrane protein which, when photoexcited, initiates the visual transduction cascade. Defects in this gene are also one of the causes of congenital stationary night blindness.



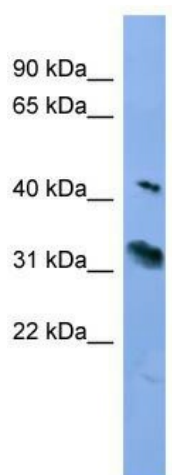
[View online »](#)

Synonyms: CSNBAD1; OPN2; RP4

Note: Immunogen Sequence Homology: Human: 100%; Pig: 93%; Rat: 93%; Sheep: 93%; Bovine: 93%; Rabbit: 93%; Guinea pig: 93%; Dog: 86%; Mouse: 86%

Protein Families: Druggable Genome, Transmembrane

Product images:



WB Suggested Anti-RHO Antibody Titration: 0.2-1 ug/ml; ELISA Titer: 1:62500; Positive Control: Human Placenta