

Product datasheet for **TA342774**

XAGE2 Rabbit Polyclonal Antibody

Product data:

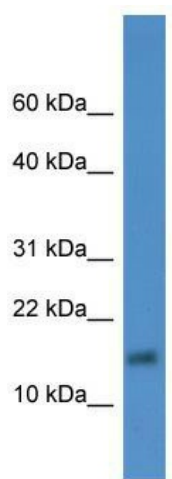
Product Type:	Primary Antibodies
Applications:	WB
Recommended Dilution:	WB
Reactivity:	Human
Host:	Rabbit
Isotype:	IgG
Clonality:	Polyclonal
Immunogen:	The immunogen for anti-XAGE2 antibody: synthetic peptide directed towards the middle region of human XAGE2. Synthetic peptide located within the following region: KSRNPTDQKREDDQGAAEIQVPDLEADLQELCQTKTGDGCEGGTDVKGK
Formulation:	Liquid. Purified antibody supplied in 1x PBS buffer with 0.09% (w/v) sodium azide and 2% sucrose. <i>Note that this product is shipped as lyophilized powder to China customers.</i>
Conjugation:	Unconjugated
Storage:	Store at -20°C as received.
Stability:	Stable for 12 months from date of receipt.
Predicted Protein Size:	12 kDa
Gene Name:	X antigen family member 2
Database Link:	NP_570133 Entrez Gene 9502 Human Q96GT9
Background:	This gene is a member of the XAGE subfamily, which belongs to the GAGE family. The GAGE genes are expressed in a variety of tumors and in some fetal and reproductive tissues. This gene is strongly expressed in normal testis, and in Ewing's sarcoma, rhabdomyosarcoma, a breast cancer and a germ cell tumor. The protein encoded by this gene shares a sequence similarity with other GAGE/PAGE proteins. Because of the expression pattern and the sequence similarity, this protein also belongs to a family of CT (cancer-testis) antigens.
Synonyms:	CT12.2; GAGED3; XAGE-2; XAGE2B



[View online »](#)

Note: Immunogen Sequence Homology: Human: 100%

Product images:



WB Suggested Anti-XAGE2 Antibody Titration: 0.2-1 ug/ml; ELISA Titer: 1:62500; Positive Control: Human heart