

## Product datasheet for **TA342773**

### TEM1 (CD248) Rabbit Polyclonal Antibody

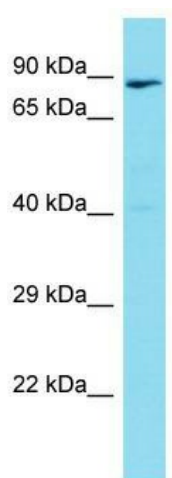
#### Product data:

Product Type:	Primary Antibodies
Applications:	WB
Recommended Dilution:	WB
Reactivity:	Mouse
Host:	Rabbit
Isotype:	IgG
Clonality:	Polyclonal
Immunogen:	The immunogen for anti-Cd248 antibody is: synthetic peptide directed towards the middle region of Mouse Cd248. Synthetic peptide located within the following region: DGAVSCRCSEGFRLAADGHSCEDPCAQAPCEQQCEPGGPQGYSCHCRLGF
Formulation:	Liquid. Purified antibody supplied in 1x PBS buffer with 0.09% (w/v) sodium azide and 2% sucrose. <i>Note that this product is shipped as lyophilized powder to China customers.</i>
Conjugation:	Unconjugated
Storage:	Store at -20°C as received.
Stability:	Stable for 12 months from date of receipt.
Predicted Protein Size:	82 kDa
Gene Name:	CD248 molecule
Database Link:	<a href="#">NP_065137</a> <a href="#">Entrez Gene 70445 Mouse</a> <a href="#">Q9HCU0</a>
Background:	Cd248 may play a role in angiogenesis or vascular function.
Synonyms:	CD164L1; TEM1
Note:	Immunogen Sequence Homology: Rat: 100%; Human: 100%; Pig: 93%; Mouse: 93%; Bovine: 93%; Rabbit: 93%; Guinea pig: 93%; Dog: 86%
Protein Families:	Druggable Genome, Transmembrane



[View online »](#)

## Product images:



Host: Rabbit; Target Name: Cd248; Sample  
Tissue: Mouse Thymus lysates; Antibody Dilution:  
1.0 ug/ml