

## Product datasheet for **TA342772**

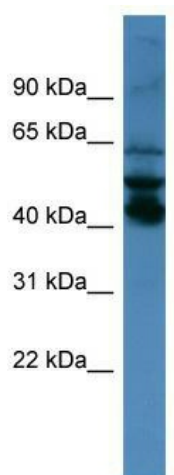
### SEPTIN1 Rabbit Polyclonal Antibody

#### Product data:

Product Type:	Primary Antibodies
Applications:	WB
Recommended Dilution:	WB
Reactivity:	Human
Host:	Rabbit
Isotype:	IgG
Clonality:	Polyclonal
Immunogen:	The immunogen for anti-SEPT1 antibody: synthetic peptide directed towards the N terminal of human SEPT1. Synthetic peptide located within the following region: FGDSVDCSDCWLPVVKFIEEQFEQYLRDESGLNRKNIQDSRVHCCLYFIS
Formulation:	Liquid. Purified antibody supplied in 1x PBS buffer with 0.09% (w/v) sodium azide and 2% sucrose. <i>Note that this product is shipped as lyophilized powder to China customers.</i>
Conjugation:	Unconjugated
Storage:	Store at -20°C as received.
Stability:	Stable for 12 months from date of receipt.
Predicted Protein Size:	42 kDa
Gene Name:	septin 1
Database Link:	<a href="#">NP_443070</a> <a href="#">Entrez Gene 1731 Human</a> <a href="#">Q8WYJ6</a>
Background:	This gene is a member of the septin family of GTPases. Members of this family are required for cytokinesis and the maintenance of cellular morphology. This gene encodes a protein that can form homo- and heterooligomeric filaments, and may contribute to the formation of neurofibrillary tangles in Alzheimer's disease.
Synonyms:	DIFF6; LARP; PNUTL3; SEP1
Note:	Immunogen Sequence Homology: Dog: 100%; Pig: 100%; Rat: 100%; Horse: 100%; Human: 100%; Mouse: 100%; Bovine: 100%; Guinea pig: 100%; Rabbit: 93%; Zebrafish: 93%



[View online »](#)

**Product images:**

WB Suggested Anti-SEPT1 Antibody Titration: 0.2-1 ug/ml; ELISA Titer: 1:62500; Positive Control: NCI-H226 cell lysate