

Product datasheet for **TA342771**

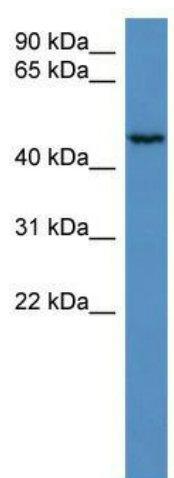
HAUS8 Rabbit Polyclonal Antibody

Product data:

Product Type:	Primary Antibodies
Applications:	WB
Recommended Dilution:	WB
Reactivity:	Human
Host:	Rabbit
Isotype:	IgG
Clonality:	Polyclonal
Immunogen:	The immunogen for anti-HAUS8 antibody: synthetic peptide directed towards the N terminal of human HAUS8. Synthetic peptide located within the following region: QTRGKMSEGGKRKSSLLQKSKADSSGVGKGDQLQSTLLEGHGTAPPDLDSA
Formulation:	Liquid. Purified antibody supplied in 1x PBS buffer with 0.09% (w/v) sodium azide and 2% sucrose. <i>Note that this product is shipped as lyophilized powder to China customers.</i>
Conjugation:	Unconjugated
Storage:	Store at -20°C as received.
Stability:	Stable for 12 months from date of receipt.
Predicted Protein Size:	45 kDa
Gene Name:	HAUS augmin like complex subunit 8
Database Link:	NP_219485 Entrez Gene 93323 Human Q9BT25
Background:	HAUS8 is 1 of 8 subunits of the 390-kD human augmin complex, or HAUS complex. The augmin complex was first identified in Drosophila, and its name comes from the Latin verb 'augmentare,' meaning 'to increase.' The augmin complex is a microtubule-binding complex involved in microtubule generation within the mitotic spindle and is vital to mitotic spindle assembly (Goshima et al., 2008 [PubMed 18443220]; Uehara et al., 2009 [PubMed 19369198]).
Synonyms:	DGT4; HICE1; NY-SAR-48
Note:	Immunogen Sequence Homology: Human: 100%; Pig: 75%



[View online »](#)

Product images:

WB Suggested Anti-HAUS8 Antibody Titration:
0.125 ug/ml; ELISA Titer: 1:312500; Positive
Control: Hela cell lysate