

Product datasheet for **TA342769**

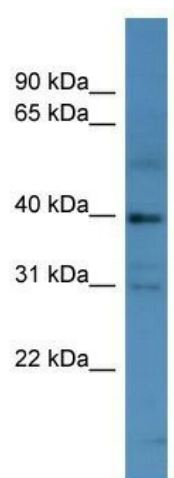
MAGEE1 (MAGEC2) Rabbit Polyclonal Antibody

Product data:

Product Type:	Primary Antibodies
Applications:	WB
Recommended Dilution:	WB
Reactivity:	Human
Host:	Rabbit
Isotype:	IgG
Clonality:	Polyclonal
Immunogen:	The immunogen for anti-MAGEC2 antibody: synthetic peptide directed towards the N terminal of human MAGEC2. Synthetic peptide located within the following region: SCCSSFSWSSFSEESSSQKGEDTGTCCQLPDESSFTYTLDEKVAELVEF
Formulation:	Liquid. Purified antibody supplied in 1x PBS buffer with 0.09% (w/v) sodium azide and 2% sucrose. <i>Note that this product is shipped as lyophilized powder to China customers.</i>
Conjugation:	Unconjugated
Storage:	Store at -20°C as received.
Stability:	Stable for 12 months from date of receipt.
Predicted Protein Size:	41 kDa
Gene Name:	MAGE family member C2
Database Link:	NP_057333 Entrez Gene 51438 Human Q9UBF1
Background:	This gene is a member of the MAGEC gene family. It is not expressed in normal tissues, except for testis, and is expressed in tumors of various histological types. This gene and the other MAGEC genes are clustered on chromosome Xq26-q27.
Synonyms:	CT10; HCA587; MAGEE1
Note:	Immunogen Sequence Homology: Human: 100%



[View online »](#)

Product images:

WB Suggested Anti-MAGEC2 Antibody Titration:
0.2-1 ug/ml; ELISA Titer: 1:62500; Positive Control:
721_B cell lysate MAGEC2 is strongly supported by
BioGPS gene expression data to be expressed in
Human 721_B cells