

Product datasheet for **TA342768**

MAGED2 Rabbit Polyclonal Antibody

Product data:

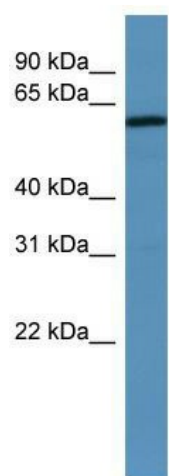
Product Type:	Primary Antibodies
Applications:	WB
Recommended Dilution:	WB
Reactivity:	Human
Host:	Rabbit
Isotype:	IgG
Clonality:	Polyclonal
Immunogen:	The immunogen for anti-MAGED2 antibody: synthetic peptide directed towards the N terminal of human MAGED2. Synthetic peptide located within the following region: TEVSKTPEAREAPATQASSTTQLTDTQVLA AENKSLAADTKKQNADPQAV
Formulation:	Liquid. Purified antibody supplied in 1x PBS buffer with 0.09% (w/v) sodium azide and 2% sucrose. <i>Note that this product is shipped as lyophilized powder to China customers.</i>
Conjugation:	Unconjugated
Storage:	Store at -20°C as received.
Stability:	Stable for 12 months from date of receipt.
Predicted Protein Size:	65 kDa
Gene Name:	MAGE family member D2
Database Link:	NP_803182 Entrez Gene 10916 Human Q9UNF1
Background:	This gene is a member of the MAGED gene family. While the MAGEA and MAGEB genes are silent in normal tissues with the exception of testis and placenta, the MAGED genes are expressed ubiquitously. The MAGED genes are clustered on chromosome Xp11. This gene is located in Xp11.2, a hot spot for X-linked mental retardation (XLMR). Multiple alternatively spliced transcript variants have been found for this gene, however, the full length nature of some variants has not been defined.
Synonyms:	11B6; BCG-1; BCG1; HCA10; MAGE-D2



[View online »](#)

Note: Immunogen Sequence Homology: Human: 100%; Horse: 85%; Rabbit: 85%; Dog: 83%; Pig: 83%

Product images:



WB Suggested Anti-MAGED2 Antibody Titration:
0.2-1 ug/ml; ELISA Titer: 1:62500; Positive Control:
Human brain