

## Product datasheet for **TA342766**

### **MAGEA11 Rabbit Polyclonal Antibody**

#### **Product data:**

<b>Product Type:</b>	Primary Antibodies
<b>Applications:</b>	WB
<b>Recommended Dilution:</b>	WB
<b>Reactivity:</b>	Human
<b>Host:</b>	Rabbit
<b>Isotype:</b>	IgG
<b>Clonality:</b>	Polyclonal
<b>Immunogen:</b>	The immunogen for anti-MAGEA11 antibody: synthetic peptide directed towards the middle region of human MAGEA11. Synthetic peptide located within the following region: FSSTLNVGTLEELPAAESPSPQSPQEESFSPTAMDAIFGSLSDGSGSQ
<b>Formulation:</b>	Liquid. Purified antibody supplied in 1x PBS buffer with 0.09% (w/v) sodium azide and 2% sucrose. <i>Note that this product is shipped as lyophilized powder to China customers.</i>
<b>Conjugation:</b>	Unconjugated
<b>Storage:</b>	Store at -20°C as received.
<b>Stability:</b>	Stable for 12 months from date of receipt.
<b>Predicted Protein Size:</b>	48 kDa
<b>Gene Name:</b>	MAGE family member A11
<b>Database Link:</b>	<a href="#">NP_005357</a> <a href="#">Entrez Gene 4110 Human P43364</a>
<b>Background:</b>	This gene is a member of the MAGEA gene family. The members of this family encode proteins with 50 to 80% sequence identity to each other. The promoters and first exons of the MAGEA genes show considerable variability, suggesting that the existence of this gene family enables the same function to be expressed under different transcriptional controls. The MAGEA genes are clustered at chromosomal location Xq28. They have been implicated in some hereditary disorders, such as dyskeratosis congenita. Two transcript variants encoding different isoforms have been found for this gene.

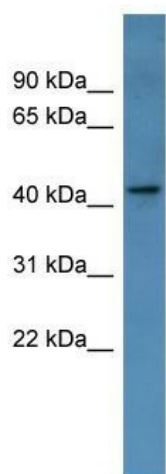


[View online »](#)

Synonyms: CT1.11; MAGE-11; MAGE11; MAGEA-11

Note: Immunogen Sequence Homology: Human: 100%; Zebrafish

### Product images:



WB Suggested Anti-MAGEA11 Antibody Titration:  
0.2-1 ug/ml; ELISA Titer: 1:62500; Positive Control:  
Human heart