

Product datasheet for **TA342764**

ENOX2 Rabbit Polyclonal Antibody

Product data:

Product Type:	Primary Antibodies
Applications:	WB
Recommended Dilution:	WB
Reactivity:	Human
Host:	Rabbit
Isotype:	IgG
Clonality:	Polyclonal
Immunogen:	The immunogen for anti-ENOX2 antibody: synthetic peptide directed towards the N terminal of human ENOX2. Synthetic peptide located within the following region: YRIRLGSSTDKKDTGRLHVDFQAQRDDLYEWECKQRMLAREERHRRRMEE
Formulation:	Liquid. Purified antibody supplied in 1x PBS buffer with 0.09% (w/v) sodium azide and 2% sucrose. <i>Note that this product is shipped as lyophilized powder to China customers.</i>
Conjugation:	Unconjugated
Storage:	Store at -20°C as received.
Stability:	Stable for 12 months from date of receipt.
Predicted Protein Size:	66 kDa
Gene Name:	ecto-NOX disulfide-thiol exchanger 2
Database Link:	NP_006366 Entrez Gene 10495 Human Q16206
Background:	The protein encoded by this gene is a growth-related cell surface protein. It was identified because it reacts with the monoclonal antibody KI in cells, such as the ovarian carcinoma line OVCAR-3, also expressing the CAKI surface glycoprotein. The encoded protein has two enzymatic activities: catalysis of hydroquinone or NADH oxidation, and protein disulfide interchange. The two activities alternate with a period length of about 24 minutes. The encoded protein also displays prion-like properties. Two transcript variants encoding different isoforms have been found for this gene.



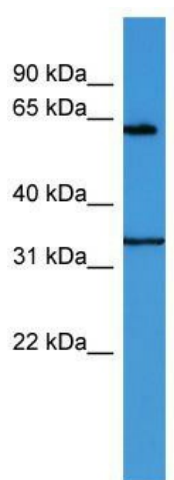
[View online »](#)

Synonyms: APK1; COVA1; tNOX

Note: Immunogen Sequence Homology: Dog: 100%; Pig: 100%; Rat: 100%; Horse: 100%; Human: 100%; Mouse: 100%; Rabbit: 100%; Zebrafish: 100%; Guinea pig: 100%; Bovine: 93%

Protein Families: Secreted Protein

Product images:



WB Suggested Anti-ENOX2 Antibody Titration:
0.2-1 ug/ml; ELISA Titer: 1:312500; Positive
Control: U937 cell lysate