

Product datasheet for **TA342762**

DNAJC2 Rabbit Polyclonal Antibody

Product data:

Product Type:	Primary Antibodies
Applications:	WB
Recommended Dilution:	WB
Reactivity:	Human
Host:	Rabbit
Isotype:	IgG
Clonality:	Polyclonal
Immunogen:	The immunogen for anti-DNAJC2 antibody: synthetic peptide directed towards the C terminal of human DNAJC2. Synthetic peptide located within the following region: EINEQIRKEKEEAARMRQASKNTEKSTGGGGNGSKNWSDDLQLLIKAV
Formulation:	Liquid. Purified antibody supplied in 1x PBS buffer with 0.09% (w/v) sodium azide and 2% sucrose. <i>Note that this product is shipped as lyophilized powder to China customers.</i>
Conjugation:	Unconjugated
Storage:	Store at -20°C as received.
Stability:	Stable for 12 months from date of receipt.
Predicted Protein Size:	72 kDa
Gene Name:	DnaJ heat shock protein family (Hsp40) member C2
Database Link:	NP_055192 Entrez Gene 27000 Human Q99543



[View online »](#)

Background:

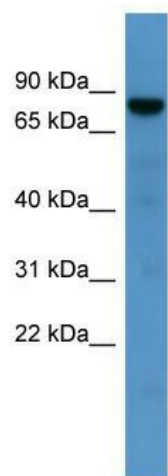
This gene is a member of the M-phase phosphoprotein (MPP) family. The gene encodes a phosphoprotein with a J domain and a Myb DNA-binding domain which localizes to both the nucleus and the cytosol. The protein is capable of forming a heterodimeric complex that associates with ribosomes, acting as a molecular chaperone for nascent polypeptide chains as they exit the ribosome. This protein was identified as a leukemia-associated antigen and expression of the gene is upregulated in leukemic blasts. Also, chromosomal aberrations involving this gene are associated with primary head and neck squamous cell tumors. This gene has a pseudogene on chromosome 6. Alternatively spliced variants which encode different protein isoforms have been described.

Synonyms:

MPHOSPH11; MPP11; ZRF1; ZUO1

Note:

Immunogen Sequence Homology: Human: 100%; Pig: 93%; Rat: 93%; Horse: 93%; Rabbit: 93%; Guinea pig: 93%; Dog: 92%; Mouse: 92%; Bovine: 86%

Product images:

WB Suggested Anti-DNAJC2 Antibody Titration:
0.2-1 ug/ml; ELISA Titer: 1:62500; Positive Control:
Human Liver