

## Product datasheet for **TA342761**

### SLX4 Rabbit Polyclonal Antibody

#### Product data:

Product Type:	Primary Antibodies
Applications:	WB
Recommended Dilution:	WB
Reactivity:	Human
Host:	Rabbit
Isotype:	IgG
Clonality:	Polyclonal
Immunogen:	The immunogen for anti-BTBD12 antibody: synthetic peptide directed towards the N terminal of human BTBD12. Synthetic peptide located within the following region: TKTLQGPAEKKPPSGSQAPRTKKQRVTKWQASEPAHSVNGEGGVLASAPD
Formulation:	Liquid. Purified antibody supplied in 1x PBS buffer with 0.09% (w/v) sodium azide and 2% sucrose. <i>Note that this product is shipped as lyophilized powder to China customers.</i>
Conjugation:	Unconjugated
Storage:	Store at -20°C as received.
Stability:	Stable for 12 months from date of receipt.
Predicted Protein Size:	200 kDa
Gene Name:	SLX4 structure-specific endonuclease subunit
Database Link:	<a href="#">NP_115820</a> <a href="#">Entrez Gene 84464 Human</a> <a href="#">Q8IY92</a>
Background:	This gene encodes a structure-specific endonuclease subunit. The encoded protein contains a central BTB domain and it forms a multiprotein complex with the ERCC4(XPF)-ERCC1, MUS81-EME1, and SLX1 endonucleases, and also associates with MSH2/MSH3 mismatch repair complex, telomere binding complex TERF2(TRF2)-TERF2IP(RAP1), the protein kinase PLK1 and the uncharacterized protein C20orf94. The multiprotein complex is required for repair of specific types of DNA lesions and is critical for cellular responses to replication fork failure. The encoded protein acts as a docking platform for the assembly of multiple structure-specific endonucleases.

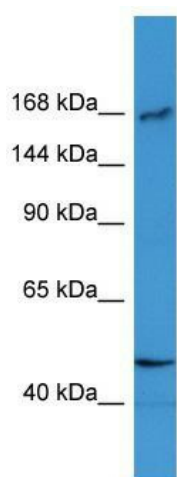


[View online »](#)

**Synonyms:** BTBD12; FANCP; MUS312

**Note:** Immunogen Sequence Homology: Human: 100%; Rabbit: 91%

**Product images:**



WB Suggested Anti-BTBD12 Antibody Titration:  
0.2-1 ug/ml; ELISA Titer: 1:1562500; Positive  
Control: ACHN cell lysate