

Product datasheet for **TA342760**

PHYHIPL Rabbit Polyclonal Antibody

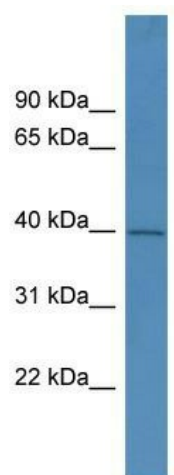
Product data:

Product Type:	Primary Antibodies
Applications:	WB
Recommended Dilution:	WB
Reactivity:	Human
Host:	Rabbit
Isotype:	IgG
Clonality:	Polyclonal
Immunogen:	The immunogen for anti-PHYHIPL antibody: synthetic peptide directed towards the C terminal of human PHYHIPL. Synthetic peptide located within the following region: QDVILEVIYTDVPDLSVGTVAEITGHQLMSLSTANAKKDPSCKTCNISVG
Formulation:	Liquid. Purified antibody supplied in 1x PBS buffer with 0.09% (w/v) sodium azide and 2% sucrose. <i>Note that this product is shipped as lyophilized powder to China customers.</i>
Conjugation:	Unconjugated
Storage:	Store at -20°C as received.
Stability:	Stable for 12 months from date of receipt.
Predicted Protein Size:	42 kDa
Gene Name:	phytanoyl-CoA 2-hydroxylase interacting protein like
Database Link:	NP_115815 Entrez Gene 84457 Human Q96FC7
Background:	PHYHIPL may play a role in the development of the central system.
Synonyms:	KIAA1796
Note:	Immunogen Sequence Homology: Dog: 100%; Pig: 100%; Rat: 100%; Horse: 100%; Human: 100%; Mouse: 100%; Bovine: 100%; Zebrafish: 100%; Guinea pig: 100%; Rabbit: 93%



[View online »](#)

Product images:



WB Suggested Anti-PHYHIPL Antibody Titration:
0.2-1 ug/ml; ELISA Titer: 1:62500; Positive Control:
Hela cell lysate