

Product datasheet for **TA342757**

HHIPL1 Rabbit Polyclonal Antibody

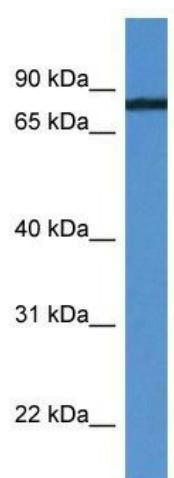
Product data:

Product Type:	Primary Antibodies
Applications:	WB
Recommended Dilution:	WB
Reactivity:	Human
Host:	Rabbit
Isotype:	IgG
Clonality:	Polyclonal
Immunogen:	The immunogen for anti-HHIPL1 antibody: synthetic peptide directed towards the C terminal of human HHIPL1. Synthetic peptide located within the following region: EFGQGGSLPILLDDVRCAGWERNLLECQHNGVGTNCEHDEDAGVVC SHQ
Formulation:	Liquid. Purified antibody supplied in 1x PBS buffer with 0.09% (w/v) sodium azide and 2% sucrose. <i>Note that this product is shipped as lyophilized powder to China customers.</i>
Conjugation:	Unconjugated
Storage:	Store at -20°C as received.
Stability:	Stable for 12 months from date of receipt.
Predicted Protein Size:	85 kDa
Gene Name:	HHIP like 1
Database Link:	NP_115801 Entrez Gene 84439 Human Q96JK4
Background:	The function of this protein remains unknown.
Synonyms:	KIAA1822; UNQ9245
Note:	Immunogen Sequence Homology: Human: 100%; Rat: 92%; Horse: 92%; Mouse: 92%; Pig: 91%; Dog: 86%; Zebrafish: 86%; Guinea pig: 86%; Bovine: 85%; Rabbit: 85%
Protein Families:	Druggable Genome



[View online »](#)

Product images:



WB Suggested Anti-HHIPL1 Antibody Titration:
0.2-1 ug/ml; ELISA Titer: 1:62500; Positive Control:
MDA-MB-435S cell lysate