

## Product datasheet for **TA342756**

### GPR123 (ADGRA1) Rabbit Polyclonal Antibody

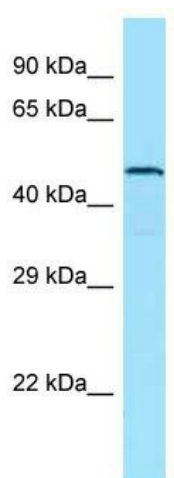
#### Product data:

Product Type:	Primary Antibodies
Applications:	WB
Recommended Dilution:	WB
Reactivity:	Human
Host:	Rabbit
Isotype:	IgG
Clonality:	Polyclonal
Immunogen:	The immunogen for anti-GPR123 antibody is: synthetic peptide directed towards the C-terminal region of Human GPR123. Synthetic peptide located within the following region: YHIPSSLDGSPRSSRTDSPSSLDGPAGHTLACCTQGDPFPMVTQPEGS
Formulation:	Liquid. Purified antibody supplied in 1x PBS buffer with 0.09% (w/v) sodium azide and 2% sucrose. <i>Note that this product is shipped as lyophilized powder to China customers.</i>
Purification:	Affinity Purified
Conjugation:	Unconjugated
Storage:	Store at -20°C as received.
Stability:	Stable for 12 months from date of receipt.
Predicted Protein Size:	50 kDa
Gene Name:	adhesion G protein-coupled receptor A1
Database Link:	<a href="#">NP_001077378</a> <a href="#">Entrez Gene 84435 Human</a> <a href="#">Q86SQ6</a>
Background:	GPR123 is a orphan receptor.
Synonyms:	GPR123
Note:	Immunogen Sequence Homology: Human: 100%; Dog: 93%; Pig: 93%; Horse: 93%; Rabbit: 93%; Guinea pig: 93%; Rat: 85%; Bovine: 79%
Protein Families:	Transmembrane



[View online »](#)

## Product images:



Host: Rabbit; Target Name: GPR123; Sample  
Tissue: PANC1 Whole Cell lysates; Antibody  
Dilution: 1.0 ug/ml