

Product datasheet for **TA342754**

CERKL Rabbit Polyclonal Antibody

Product data:

Product Type:	Primary Antibodies
Applications:	WB
Recommended Dilution:	WB
Reactivity:	Human
Host:	Rabbit
Isotype:	IgG
Clonality:	Polyclonal
Immunogen:	The immunogen for anti-CERKL antibody: synthetic peptide directed towards the C terminal of human CERKL. Synthetic peptide located within the following region: ASVKNQFNFPVETYVVEEVKVHPRNNTGGYNPEEEEDETASENCFWNV
Formulation:	Liquid. Purified antibody supplied in 1x PBS buffer with 0.09% (w/v) sodium azide and 2% sucrose. <i>Note that this product is shipped as lyophilized powder to China customers.</i>
Conjugation:	Unconjugated
Storage:	Store at -20°C as received.
Stability:	Stable for 12 months from date of receipt.
Predicted Protein Size:	51 kDa
Gene Name:	ceramide kinase like
Database Link:	NP_001025482 Entrez Gene 375298 Human Q49MI3
Background:	This gene was initially identified as a locus (RP26) associated with an autosomal recessive form of retinitis pigmentosa (arRP) disease. This gene encodes a protein with ceramide kinase-like domains, however, the protein does not phosphorylate ceramide and its target substrate is currently unknown. This protein may be a negative regulator of apoptosis in photoreceptor cells. Mutations in this gene cause a form of retinitis pigmentosa characterized by autosomal recessive cone and rod dystrophy (arCRD). Alternative splicing of this gene results in multiple transcript variants encoding different isoforms and non-coding transcripts.



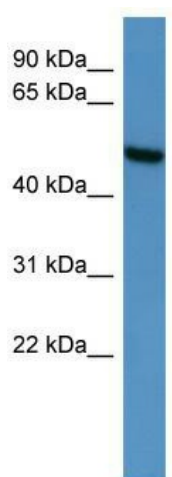
[View online »](#)

Synonyms: RP26

Note: Immunogen Sequence Homology: Human: 100%; Dog: 90%; Yeast: 89%; Rabbit: 81%; Pig: 79%; Rat: 79%; Horse: 79%; Mouse: 79%; Zebrafish: 79%; Guinea pig: 79%

Protein Families: Druggable Genome

Product images:



WB Suggested Anti-CERKL Antibody Titration: 0.2-1 ug/ml; ELISA Titer: 1:62500; Positive Control: Human heart