

Product datasheet for **TA342751**

GRK7 Rabbit Polyclonal Antibody

Product data:

Product Type:	Primary Antibodies
Applications:	WB
Recommended Dilution:	WB
Reactivity:	Human
Host:	Rabbit
Isotype:	IgG
Clonality:	Polyclonal
Immunogen:	The immunogen for anti-GRK7 antibody: synthetic peptide directed towards the C terminal of human GRK7. Synthetic peptide located within the following region: FFKNFATGAVPIAWQEEIITGLFEELNDPNRPTGCEEENSSKSGVCLLL
Formulation:	Liquid. Purified antibody supplied in 1x PBS buffer with 0.09% (w/v) sodium azide and 2% sucrose. <i>Note that this product is shipped as lyophilized powder to China customers.</i>
Conjugation:	Unconjugated
Storage:	Store at -20°C as received.
Stability:	Stable for 12 months from date of receipt.
Predicted Protein Size:	62 kDa
Gene Name:	G protein-coupled receptor kinase 7
Database Link:	NP_631948 Entrez Gene 131890 Human Q8WTQ7
Background:	This gene encodes a member of the guanine nucleotide-binding protein (G protein)-coupled receptor kinase subfamily of the Ser/Thr protein kinase family. It is specifically expressed in the retina and the encoded protein has been shown to phosphorylate cone opsins and initiate their deactivation.
Synonyms:	GPRK7
Note:	Immunogen Sequence Homology: Human: 100%; Dog: 92%; Pig: 91%; Guinea pig: 91%; Bovine: 85%; Rat: 82%; Horse: 79%

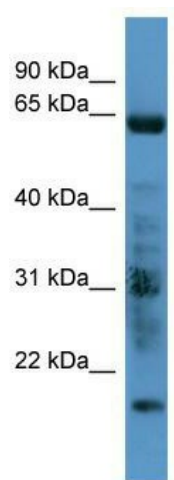


[View online »](#)

Protein Families: Druggable Genome, Protein Kinase

Protein Pathways: Chemokine signaling pathway, Endocytosis

Product images:



WB Suggested Anti-GRK7 Antibody Titration: 0.2-1 ug/ml; ELISA Titer: 1:62500; Positive Control: Human heart