

Product datasheet for **TA342748**

CACNA2D4 Rabbit Polyclonal Antibody

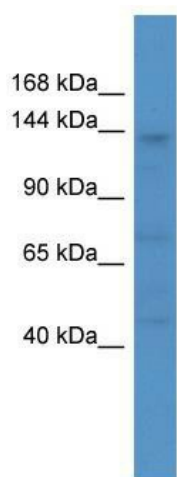
Product data:

Product Type:	Primary Antibodies
Applications:	WB
Recommended Dilution:	WB
Reactivity:	Human
Host:	Rabbit
Isotype:	IgG
Clonality:	Polyclonal
Immunogen:	The immunogen for anti-CACNA2D4 antibody: synthetic peptide directed towards the C terminal of human CACNA2D4. Synthetic peptide located within the following region: MAFLGTRAGLLRSSLFVGSEKVSDRKFLTPEDEASVFTLDRFPLWYRQAS
Formulation:	Liquid. Purified antibody supplied in 1x PBS buffer with 0.09% (w/v) sodium azide and 2% sucrose. <i>Note that this product is shipped as lyophilized powder to China customers.</i>
Conjugation:	Unconjugated
Storage:	Store at -20°C as received.
Stability:	Stable for 12 months from date of receipt.
Predicted Protein Size:	128 kDa
Gene Name:	calcium voltage-gated channel auxiliary subunit alpha2delta 4
Database Link:	NP_758952 Entrez Gene 93589 Human Q7Z3S7
Background:	This gene encodes a member of the alpha-2/delta subunit family, a protein in the voltage-dependent calcium channel complex. Calcium channels mediate the influx of calcium ions into the cell upon membrane polarization and consist of a complex of alpha-1, alpha-2/delta, beta, and gamma subunits in a 1:1:1:1 ratio. Various versions of each of these subunits exist, either expressed from similar genes or the result of alternative splicing. Research on a highly similar protein in rabbit suggests the protein described in this record is cleaved into alpha-2 and delta subunits. Alternate transcriptional splice variants of this gene have been observed but have not been thoroughly characterized.



[View online »](#)

Synonyms:	RCD4
Note:	Immunogen Sequence Homology: Rat: 100%; Human: 100%; Mouse: 100%; Pig: 93%; Horse: 93%; Rabbit: 93%; Guinea pig: 93%; Bovine: 85%
Protein Families:	Druggable Genome, Ion Channels: Other
Protein Pathways:	Arrhythmogenic right ventricular cardiomyopathy (ARVC), Cardiac muscle contraction, Dilated cardiomyopathy, Hypertrophic cardiomyopathy (HCM), MAPK signaling pathway

Product images:

WB Suggested Anti-CACNA2D4 Antibody
Titration: 0.2-1 ug/ml; ELISA Titer: 1:62500;
Positive Control: 293T cell lysate