

## Product datasheet for **TA342747**

### NETO1 Rabbit Polyclonal Antibody

#### Product data:

Product Type:	Primary Antibodies
Applications:	IHC, WB
Recommended Dilution:	WB, IHC
Reactivity:	Human, Mouse
Host:	Rabbit
Isotype:	IgG
Clonality:	Polyclonal
Immunogen:	The immunogen for anti-NETO1 antibody: synthetic peptide directed towards the C terminal of human NETO1. Synthetic peptide located within the following region: MCINNTLVCNGLQNCVYPWDENHCKEKRKTSLLDQLTNTSGTVIGVTSCI
Formulation:	Liquid. Purified antibody supplied in 1x PBS buffer with 0.09% (w/v) sodium azide and 2% sucrose. <i>Note that this product is shipped as lyophilized powder to China customers.</i>
Conjugation:	Unconjugated
Storage:	Store at -20°C as received.
Stability:	Stable for 12 months from date of receipt.
Predicted Protein Size:	58 kDa
Gene Name:	neuropilin and tolloid like 1
Database Link:	<a href="#">NP_620416</a> <a href="#">Entrez Gene 246317 Mouse</a> <a href="#">Entrez Gene 81832 Human</a> <a href="#">Q8TDF5</a>
Background:	This gene encodes a predicted transmembrane protein containing two extracellular CUB domains followed by a low-density lipoprotein class A (LDL <sub>A</sub> ) domain. A similar gene in mice encodes a protein that plays a critical role in spatial learning and memory by regulating the function of synaptic N-methyl-D-aspartic acid receptor complexes in the hippocampus. Alternatively spliced transcript variants encoding multiple isoforms have been observed for this gene.
Synonyms:	BCTL1; BTCL1

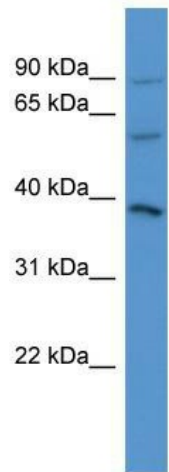


[View online »](#)

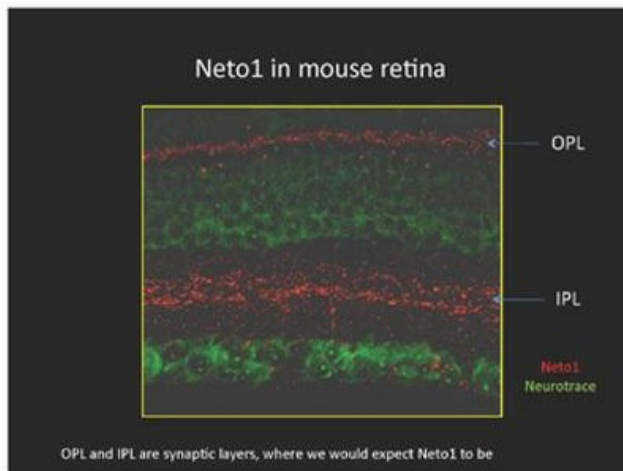
**Note:** Immunogen Sequence Homology: Rat: 100%; Human: 100%; Mouse: 100%; Rabbit: 100%; Zebrafish: 100%; Dog: 93%; Pig: 93%; Horse: 93%; Guinea pig: 93%; Bovine: 86%

**Protein Families:** Druggable Genome, Transmembrane

**Product images:**



WB Suggested Anti-NETO1 Antibody Titration:  
0.2-1 ug/ml; ELISA Titer: 1:62500; Positive Control:  
721\_B cell lysate



Immunohistochemistry with mice retinal neurons tissue at an antibody concentration of researcher doesn't say using anti-NETO1 antibody