

## Product datasheet for **TA342743**

### CABP4 Rabbit Polyclonal Antibody

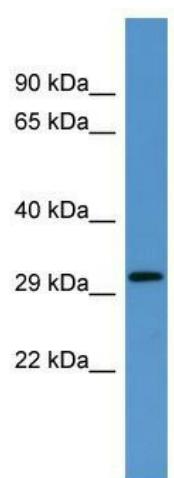
#### Product data:

Product Type:	Primary Antibodies
Applications:	WB
Recommended Dilution:	WB
Reactivity:	Human
Host:	Rabbit
Isotype:	IgG
Clonality:	Polyclonal
Immunogen:	The immunogen for anti-CABP4 antibody: synthetic peptide directed towards the N terminal of human CABP4. Synthetic peptide located within the following region: PSTGEGPAGAPPASPGPASSRQSHRHRPDSLHDAAQRTYGPLLNRVFGKD
Formulation:	Liquid. Purified antibody supplied in 1x PBS buffer with 0.09% (w/v) sodium azide and 2% sucrose. <i>Note that this product is shipped as lyophilized powder to China customers.</i>
Conjugation:	Unconjugated
Storage:	Store at -20°C as received.
Stability:	Stable for 12 months from date of receipt.
Predicted Protein Size:	30 kDa
Gene Name:	calcium binding protein 4
Database Link:	<a href="#">NP_660201</a> <a href="#">Entrez Gene 57010 Human P57796</a>
Background:	This gene encodes a member of the CABP family of calcium binding protein characterized by four EF-hand motifs. Mutations in this gene are associated with congenital stationary night blindness type 2B.
Synonyms:	CRSD; CSNB2B
Note:	Immunogen Sequence Homology: Human: 100%; Horse: 85%; Dog: 75%



[View online »](#)

## Product images:



WB Suggested Anti-CABP4 Antibody Titration: 0.2-1 ug/ml; ELISA Titer: 1:62500; Positive Control: Human Lung