

## Product datasheet for TA342742

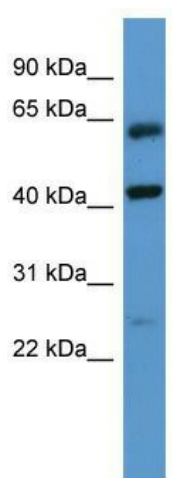
### GPRC5B Rabbit Polyclonal Antibody

#### Product data:

Product Type:	Primary Antibodies
Applications:	WB
Recommended Dilution:	WB
Reactivity:	Human
Host:	Rabbit
Isotype:	IgG
Clonality:	Polyclonal
Immunogen:	The immunogen for anti-GPRC5B antibody: synthetic peptide directed towards the N terminal of human GPRC5B. Synthetic peptide located within the following region: AVAGAGALITLLLMLILLVRLPFIKEKEKSPVGLHFLFLLGTLGLFGLT
Formulation:	Liquid. Purified antibody supplied in 1x PBS buffer with 0.09% (w/v) sodium azide and 2% sucrose.
Conjugation:	Unconjugated
Storage:	Store at -20°C as received.
Stability:	Stable for 12 months from date of receipt.
Predicted Protein Size:	42 kDa
Gene Name:	G protein-coupled receptor class C group 5 member B
Database Link:	<a href="#">NP_057319</a> <a href="#">Entrez Gene 51704 Human</a> <a href="#">Q9NZH0</a>
Background:	The protein encoded by this gene is a member of the type 3 G protein-coupled receptor family. Members of this superfamily are characterized by a signature 7-transmembrane domain motif. The specific function of this protein is unknown; however, this protein may mediate the cellular effects of retinoic acid on the G protein signal transduction cascade.
Synonyms:	RAIG-2; RAIG2
Note:	Immunogen Sequence Homology: Human: 100%; Dog: 86%; Horse: 86%; Bovine: 86%; Pig: 83%; Mouse
Protein Families:	Druggable Genome


[View online »](#)

## Product images:



WB Suggested Anti-GPRC5B Antibody Titration:  
0.2-1 ug/ml; ELISA Titer: 1:62500; Positive Control:  
Human Muscle