

Product datasheet for **TA342740**

Fascin 2 (FSCN2) Rabbit Polyclonal Antibody

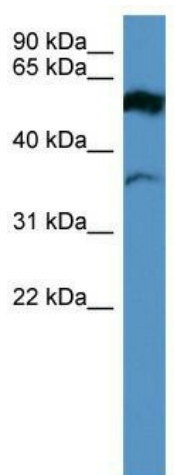
Product data:

Product Type:	Primary Antibodies
Applications:	WB
Recommended Dilution:	WB
Reactivity:	Human
Host:	Rabbit
Isotype:	IgG
Clonality:	Polyclonal
Immunogen:	The immunogen for anti-FSCN2 antibody: synthetic peptide directed towards the middle region of human FSCN2. Synthetic peptide located within the following region: AGTLKAGRNTRPGKDELFDLEESHQPWLVAANHRYVSVRQGVNVSANQD
Formulation:	Liquid. Purified antibody supplied in 1x PBS buffer with 0.09% (w/v) sodium azide and 2% sucrose.
Conjugation:	Unconjugated
Storage:	Store at -20°C as received.
Stability:	Stable for 12 months from date of receipt.
Predicted Protein Size:	57 kDa
Gene Name:	fascin actin-bundling protein 2, retinal
Database Link:	NP_001070650 Entrez Gene 25794 Human O14926
Background:	This gene encodes a member of the fascin protein family. Fascins crosslink actin into filamentous bundles within dynamic cell extensions. This family member is proposed to play a role in photoreceptor disk morphogenesis. A mutation in this gene results in one form of autosomal dominant retinitis pigmentosa and macular degeneration. Multiple transcript variants encoding different isoforms have been found for this gene.
Synonyms:	RFSN; RP30
Note:	Immunogen Sequence Homology: Pig: 100%; Rat: 100%; Human: 100%; Guinea pig: 100%; Dog: 93%; Horse: 93%; Mouse: 93%; Bovine: 93%; Rabbit: 86%; Zebrafish: 86%



[View online »](#)

Product images:



WB Suggested Anti-FSCN2 Antibody Titration: 0.2-1 ug/ml; ELISA Titer: 1:312500; Positive Control: Human brain