

## Product datasheet for **TA342739**

### Encephalopsin (OPN3) Rabbit Polyclonal Antibody

#### Product data:

Product Type:	Primary Antibodies
Applications:	WB
Recommended Dilution:	WB
Reactivity:	Human
Host:	Rabbit
Isotype:	IgG
Clonality:	Polyclonal
Immunogen:	The immunogen for anti-OPN3 antibody: synthetic peptide directed towards the C terminal of human OPN3. Synthetic peptide located within the following region: IVMSQKDGDRPKKKVTFNSSIIFIITSDELSVDDSDKTNGSKVDVIQV
Formulation:	Liquid. Purified antibody supplied in 1x PBS buffer with 0.09% (w/v) sodium azide and 2% sucrose. <i>Note that this product is shipped as lyophilized powder to China customers.</i>
Conjugation:	Unconjugated
Storage:	Store at -20°C as received.
Stability:	Stable for 12 months from date of receipt.
Predicted Protein Size:	45 kDa
Gene Name:	opsin 3
Database Link:	<a href="#">NP_055137</a> <a href="#">Entrez Gene 23596 Human</a> <a href="#">Q9H1Y3</a>
Background:	Opsins are members of the guanine nucleotide-binding protein (G protein)-coupled receptor superfamily. In addition to the visual opsins, mammals possess several photoreceptive non-visual opsins that are expressed in extraocular tissues. This gene, opsin 3, is strongly expressed in brain and testis and weakly expressed in liver, placenta, heart, lung, skeletal muscle, kidney, and pancreas. The gene may also be expressed in the retina. The protein has the canonical features of a photoreceptive opsin protein.
Synonyms:	ECPN; PPP1R116

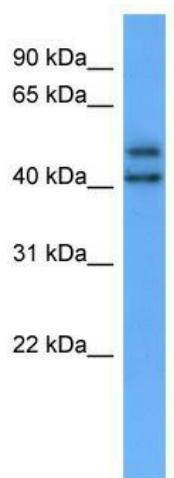


[View online »](#)

**Note:** Immunogen Sequence Homology: Human: 100%; Pig: 86%; Horse: 86%; Guinea pig: 86%

**Protein Families:** Druggable Genome, GPCR, Transmembrane

**Product images:**



WB Suggested Anti-OPN3 Antibody Titration: 0.2-1 ug/ml; ELISA Titer: 1:62500; Positive Control: 721\_B cell lysate