

Product datasheet for **TA342738**

IQ motif containing B1 (IQCB1) Rabbit Polyclonal Antibody

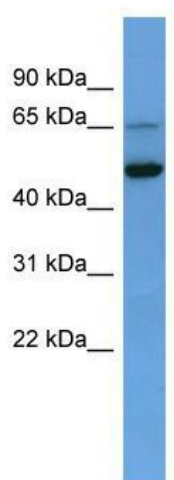
Product data:

Product Type:	Primary Antibodies
Applications:	WB
Recommended Dilution:	WB
Reactivity:	Human
Host:	Rabbit
Isotype:	IgG
Clonality:	Polyclonal
Immunogen:	The immunogen for anti-IQCB1 antibody: synthetic peptide directed towards the C terminal of human IQCB1. Synthetic peptide located within the following region: LQHYFMGRAL EERAQQHREALIAQISTNVEQLMKAPSLKEAEGKEPELFL
Formulation:	Liquid. Purified antibody supplied in 1x PBS buffer with 0.09% (w/v) sodium azide and 2% sucrose.
Conjugation:	Unconjugated
Storage:	Store at -20°C as received.
Stability:	Stable for 12 months from date of receipt.
Predicted Protein Size:	51 kDa
Gene Name:	IQ motif containing B1
Database Link:	NP_001018865 Entrez Gene 9657 Human Q15051
Background:	This gene encodes a nephrocystin protein that interacts with calmodulin and the retinitis pigmentosa GTPase regulator protein. The encoded protein has a central coiled-coil region and two calmodulin-binding IQ domains. It is localized to the primary cilia of renal epithelial cells and connecting cilia of photoreceptor cells. The protein is thought to play a role in ciliary function. Defects in this gene result in Senior-Loken syndrome type 5. Alternative splicing results in multiple transcript variants.
Synonyms:	NPHP5; PIQ; SLSN5


[View online »](#)

Note: Immunogen Sequence Homology: Dog: 100%; Rat: 100%; Horse: 100%; Human: 100%; Pig: 92%; Mouse: 92%; Bovine: 92%; Guinea pig: 92%; Rabbit: 85%

Product images:



WB Suggested Anti-IQCB1 Antibody Titration: 0.2-1 ug/ml; ELISA Titer: 1:62500; Positive Control: Human heart