

Product datasheet for **TA342737**

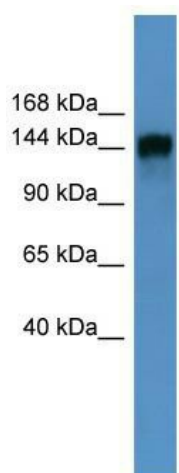
NIR2 (PITPNM1) Rabbit Polyclonal Antibody

Product data:

Product Type:	Primary Antibodies
Applications:	WB
Recommended Dilution:	WB
Reactivity:	Human
Host:	Rabbit
Isotype:	IgG
Clonality:	Polyclonal
Immunogen:	The immunogen for anti-PITPNM1 antibody: synthetic peptide directed towards the N terminal of human PITPNM1. Synthetic peptide located within the following region: PDGGQQPNVFNLSGAERRQRIVDTIDIVRDAVAPGEYKAEDPRLYRSAK
Formulation:	Liquid. Purified antibody supplied in 1x PBS buffer with 0.09% (w/v) sodium azide and 2% sucrose.
Conjugation:	Unconjugated
Storage:	Store at -20°C as received.
Stability:	Stable for 12 months from date of receipt.
Predicted Protein Size:	135 kDa
Gene Name:	phosphatidylinositol transfer protein membrane associated 1
Database Link:	NP_001124320 Entrez Gene 9600 Human O00562
Background:	PITPNM1 belongs to a family of membrane-associated phosphatidylinositol transfer domain-containing proteins that share homology with the Drosophila retinal degeneration B (rdgB) protein (Ocana et al., 2005 [PubMed 15627748]).
Synonyms:	DRES9; NIR2; PITPNM; Rd9; RDGB; RDGB1; RDGBA; RDGBA1
Note:	Immunogen Sequence Homology: Dog: 100%; Pig: 100%; Rat: 100%; Horse: 100%; Human: 100%; Mouse: 100%; Bovine: 100%; Guinea pig: 100%
Protein Families:	Druggable Genome



[View online »](#)

Product images:

WB Suggested Anti-PITPNM1 Antibody Titration:
0.2-1 ug/ml; ELISA Titer: 1:62500; Positive Control:
Human heart