

## Product datasheet for **TA342736**

### ALDH1A2 Rabbit Polyclonal Antibody

#### Product data:

Product Type:	Primary Antibodies
Applications:	WB
Recommended Dilution:	WB
Reactivity:	Human
Host:	Rabbit
Isotype:	IgG
Clonality:	Polyclonal
Immunogen:	The immunogen for anti-ALDH1A2 antibody: synthetic peptide directed towards the N terminal of human ALDH1A2. Synthetic peptide located within the following region: PVYNPATGEQVCEVQEADKADIDKAVQAARLAFSLGSVWRRMDASERGL
Formulation:	Liquid. Purified antibody supplied in 1x PBS buffer with 0.09% (w/v) sodium azide and 2% sucrose. <i>Note that this product is shipped as lyophilized powder to China customers.</i>
Conjugation:	Unconjugated
Storage:	Store at -20°C as received.
Stability:	Stable for 12 months from date of receipt.
Predicted Protein Size:	57 kDa
Gene Name:	aldehyde dehydrogenase 1 family member A2
Database Link:	<a href="#">NP_003879</a> <a href="#">Entrez Gene 8854 Human</a> <a href="#">O94788</a>
Background:	This protein belongs to the aldehyde dehydrogenase family of proteins. The product of this gene is an enzyme that catalyzes the synthesis of retinoic acid (RA) from retinaldehyde. Retinoic acid, the active derivative of vitamin A (retinol), is a hormonal signaling molecule that functions in developing and adult tissues. The studies of a similar mouse gene suggest that this enzyme and the cytochrome CYP26A1, concurrently establish local embryonic retinoic acid levels which facilitate posterior organ development and prevent spina bifida. Three transcript variants encoding distinct isoforms have been identified for this gene.



[View online »](#)

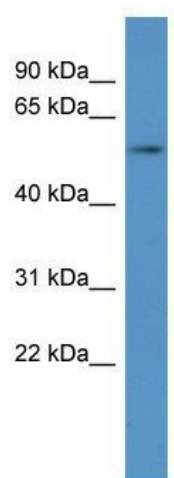
**Synonyms:** RALDH(II); RALDH2; RALDH2-T

**Note:** Immunogen Sequence Homology: Dog: 100%; Pig: 100%; Horse: 100%; Human: 100%; Bovine: 100%; Rabbit: 100%; Guinea pig: 100%; Rat: 93%; Mouse: 93%; Zebrafish: 86%

**Protein Families:** Druggable Genome

**Protein Pathways:** Metabolic pathways, Retinol metabolism

### Product images:



WB Suggested Anti-ALDH1A2 Antibody Titration:  
0.2-1 ug/ml; ELISA Titer: 1:62500; Positive Control:  
Human brain