

## Product datasheet for **TA342734**

### GRK1 Rabbit Polyclonal Antibody

#### Product data:

|                         |   |
|-------------------------|---|
| Product Type:           | Primary Antibodies  |
| Applications:           | WB  |
| Recommended Dilution:   | WB  |
| Reactivity:             | Human   |
| Host:                   | Rabbit  |
| Isotype:                | IgG   |
| Clonality:              | Polyclonal  |
| Immunogen:              | The immunogen for anti-GRK1 antibody: synthetic peptide directed towards the middle region of human GRK1. Synthetic peptide located within the following region:<br>NKEKLRHRISEPVKYPDKFSQASKDFCEALLEKDPEKRLGFRDETCDKLR  |
| Formulation:            | Liquid. Purified antibody supplied in 1x PBS buffer with 0.09% (w/v) sodium azide and 2% sucrose.<br><i>Note that this product is shipped as lyophilized powder to China customers.</i>   |
| Conjugation:            | Unconjugated  |
| Storage:                | Store at -20°C as received.   |
| Stability:              | Stable for 12 months from date of receipt.  |
| Predicted Protein Size: | 63 kDa  |
| Gene Name:              | G protein-coupled receptor kinase 1   |
| Database Link:          | <a href="#">NP_002920</a><br><a href="#">Entrez Gene 6011 Human Q15835</a>  |
| Background:             | This gene encodes a member of the guanine nucleotide-binding protein (G protein)-coupled receptor kinase subfamily of the Ser/Thr protein kinase family. The protein phosphorylates rhodopsin and initiates its deactivation. Defects in GRK1 are known to cause Oguchi disease 2 (also known as stationary night blindness Oguchi type-2). |
| Synonyms:               | GPRK1; RHOK; RK   |
| Note:                   | Immunogen Sequence Homology: Human: 100%; Dog: 93%; Rat: 93%; Horse: 93%; Mouse: 93%; Bovine: 92%; Zebrafish: 83%; Pig: 79%   |

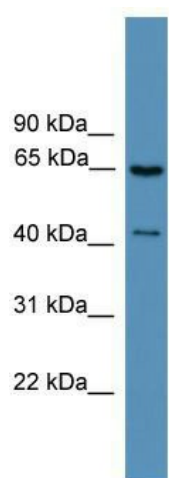


[View online »](#)

Protein Families: Druggable Genome, Protein Kinase

Protein Pathways: Chemokine signaling pathway, Endocytosis

### Product images:



WB Suggested Anti-GRK1 Antibody; Titration: 1.0 ug/ml; Positive Control: Jurkat Whole Cell