

## Product datasheet for **TA342733**

### Myocilin (MYOC) Rabbit Polyclonal Antibody

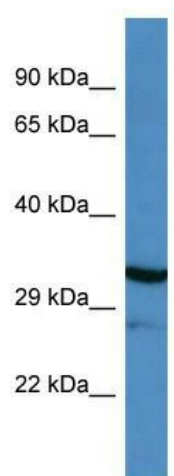
#### Product data:

Product Type:	Primary Antibodies
Applications:	WB
Recommended Dilution:	WB
Reactivity:	Human
Host:	Rabbit
Isotype:	IgG
Clonality:	Polyclonal
Immunogen:	The immunogen for anti-MYOC antibody is: synthetic peptide directed towards the N-terminal region of Human MYOC. Synthetic peptide located within the following region: QLTLDQAARPQETQEGLQRELGLRRERDQLETQTRELETAYSNLLRDKS
Formulation:	Liquid. Purified antibody supplied in 1x PBS buffer with 0.09% (w/v) sodium azide and 2% sucrose. <i>Note that this product is shipped as lyophilized powder to China customers.</i>
Purification:	Affinity Purified
Conjugation:	Unconjugated
Storage:	Store at -20°C as received.
Stability:	Stable for 12 months from date of receipt.
Predicted Protein Size:	37 kDa
Gene Name:	myocilin
Database Link:	<a href="#">NP_000252</a> <a href="#">Entrez Gene 4653 Human</a> <a href="#">Q99972</a>
Background:	The function of this protein remains unknown.
Synonyms:	GLC1A; GPOA; JOAG; JOAG1; myocilin; TIGR
Note:	Immunogen Sequence Homology: Human: 100%; Pig: 86%; Guinea pig: 86%; Rat: 79%
Protein Families:	Druggable Genome, Secreted Protein



[View online »](#)

## Product images:



Host: Rabbit; Target Name: MYOC; Sample  
Tissue: ACHN whole cell lysates; Antibody  
Dilution: 1.0 ug/ml