

## Product datasheet for **TA342731**

### GCAP2 (GUCA1B) Rabbit Polyclonal Antibody

#### Product data:

Product Type:	Primary Antibodies
Applications:	WB
Recommended Dilution:	WB
Reactivity:	Human
Host:	Rabbit
Isotype:	IgG
Clonality:	Polyclonal
Immunogen:	The immunogen for anti-GUCA1B antibody: synthetic peptide directed towards the N terminal of human GUCA1B. Synthetic peptide located within the following region: SGTLMHEFKRFFKVTDDDEEASQYVEGMFRAFDKNGDNTIDFLEYVAALN
Formulation:	Liquid. Purified antibody supplied in 1x PBS buffer with 0.09% (w/v) sodium azide and 2% sucrose. <i>Note that this product is shipped as lyophilized powder to China customers.</i>
Conjugation:	Unconjugated
Storage:	Store at -20°C as received.
Stability:	Stable for 12 months from date of receipt.
Predicted Protein Size:	23 kDa
Gene Name:	guanylate cyclase activator 1B
Database Link:	<a href="#">NP_002089</a> <a href="#">Entrez Gene 2979 Human</a> <a href="#">Q9UMX6</a>
Background:	The protein encoded by this gene is a calcium-binding protein that activates photoreceptor guanylate cyclases. This gene may have arisen due to a gene duplication event since there is a highly similar gene clustered with it on chromosome 6. Mutations in this gene can cause a form of retinitis pigmentosa.
Synonyms:	GCAP2; GUCA2; RP48
Note:	Immunogen Sequence Homology: Human: 100%; Mouse: 86%; Dog: 79%; Pig: 79%; Rat: 79%; Horse: 79%; Bovine: 79%; Rabbit: 79%; Guinea pig: 79%

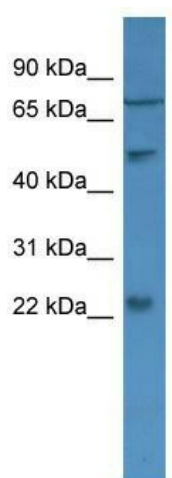


[View online »](#)

Protein Families: Druggable Genome

Protein Pathways: Olfactory transduction

### Product images:



WB Suggested Anti-GUCA1B Antibody Titration:  
0.2-1 ug/ml; ELISA Titer: 1:62500; Positive Control:  
U937 cell lysate