

Product datasheet for **TA342730**

OPN1MW Rabbit Polyclonal Antibody

Product data:

Product Type:	Primary Antibodies
Applications:	WB
Recommended Dilution:	WB
Reactivity:	Human
Host:	Rabbit
Isotype:	IgG
Clonality:	Polyclonal
Immunogen:	The immunogen for anti-OPN1MW antibody: synthetic peptide directed towards the C terminal of human OPN1MW. Synthetic peptide located within the following region: SATIYNPVIYVFMNRQFRNCILQLFGKKVDDGSELSSASKTEVSSVSSVS
Formulation:	Liquid. Purified antibody supplied in 1x PBS buffer with 0.09% (w/v) sodium azide and 2% sucrose. <i>Note that this product is shipped as lyophilized powder to China customers.</i>
Conjugation:	Unconjugated
Storage:	Store at -20°C as received.
Stability:	Stable for 12 months from date of receipt.
Predicted Protein Size:	40 kDa
Gene Name:	opsin 1 (cone pigments), medium-wave-sensitive
Database Link:	NP_000504 Entrez Gene 2652 Human P0DN77



[View online »](#)

Background:

This gene encodes for a light absorbing visual pigment of the opsin gene family. The encoded protein is called green cone photopigment or medium-wavelength sensitive opsin. Opsins are G-protein coupled receptors with seven transmembrane domains, an N-terminal extracellular domain, and a C-terminal cytoplasmic domain. The long-wavelength opsin gene and multiple copies of the medium-wavelength opsin gene are tandemly arrayed on the X chromosome and frequent unequal recombination and gene conversion may occur between these sequences. X chromosomes may have fusions of the medium- and long-wavelength opsin genes or may have more than one copy of these genes. Defects in this gene are the cause of deutanopic colorblindness.

Synonyms:

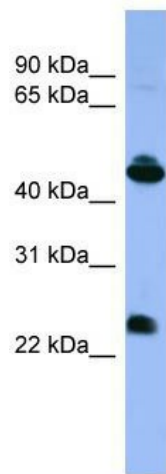
CBBM; CBD; COD5; GCP; GOP; OPN1MW1

Note:

Immunogen Sequence Homology: Human: 100%; Dog: 93%; Rat: 93%; Pig: 91%; Zebrafish: 91%; Goat: 86%; Horse: 86%; Mouse: 86%; Bovine: 86%; Rabbit: 86%; Guinea pig: 79%

Protein Families:

Druggable Genome, Transmembrane

Product images:

WB Suggested Anti-OPN1MW Antibody Titration:
0.2-1 ug/ml; ELISA Titer: 1:62500; Positive Control:
HepG2 cell lysate