

Product datasheet for **TA342729**

OPN1MW Rabbit Polyclonal Antibody

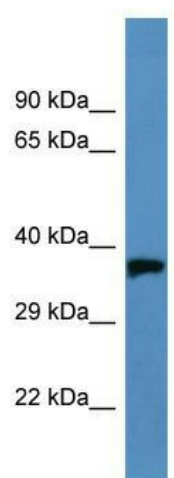
Product data:

Product Type:	Primary Antibodies
Applications:	WB
Recommended Dilution:	WB
Reactivity:	Human, Mouse
Host:	Rabbit
Isotype:	IgG
Clonality:	Polyclonal
Immunogen:	The immunogen for anti-OPN1MW antibody is: synthetic peptide directed towards the C-terminal region of Human OPN1MW. Synthetic peptide located within the following region: SIIVLCYLQVWLAIRAVAKQKKESESTQKAEKEVTRMVMVLAFCFCWG
Formulation:	Liquid. Purified antibody supplied in 1x PBS buffer with 0.09% (w/v) sodium azide and 2% sucrose. <i>Note that this product is shipped as lyophilized powder to China customers.</i>
Purification:	Affinity Purified
Conjugation:	Unconjugated
Storage:	Store at -20°C as received.
Stability:	Stable for 12 months from date of receipt.
Predicted Protein Size:	40 kDa
Gene Name:	opsin 1 (cone pigments), medium-wave-sensitive
Database Link:	NP_000504 Entrez Gene 14539 Mouse Entrez Gene 2652 Human P0DN77
Background:	The function of this protein remains unknown.
Synonyms:	CBBM; CBD; COD5; GCP; GOP; OPN1MW1
Note:	Immunogen Sequence Homology: Dog: 100%; Pig: 100%; Rat: 100%; Goat: 100%; Horse: 100%; Human: 100%; Mouse: 100%; Bovine: 100%; Rabbit: 100%; Guinea pig: 100%
Protein Families:	Druggable Genome, Transmembrane



[View online »](#)

Product images:



Host: Rabbit; Target Name: OPN1MW; Sample Tissue: Fetal Heart lysates; Antibody Dilution: 1.0 ug/ml