

Product datasheet for **TA342728**

Cryptochrome I (CRY1) Rabbit Polyclonal Antibody

Product data:

Product Type:	Primary Antibodies
Applications:	IHC, WB
Recommended Dilution:	WB, IHC
Reactivity:	Human
Host:	Rabbit
Isotype:	IgG
Clonality:	Polyclonal
Immunogen:	The immunogen for anti-CRY1 antibody: synthetic peptide directed towards the N terminal of human CRY1. Synthetic peptide located within the following region: KRFQTLISKMEPLEIPVETITSEVIEKCTTPLSDDHDEKYGVPSLEELGF
Formulation:	Liquid. Purified antibody supplied in 1x PBS buffer with 0.09% (w/v) sodium azide and 2% sucrose. <i>Note that this product is shipped as lyophilized powder to China customers.</i>
Conjugation:	Unconjugated
Storage:	Store at -20°C as received.
Stability:	Stable for 12 months from date of receipt.
Predicted Protein Size:	64 kDa
Gene Name:	cryptochrome circadian clock 1
Database Link:	NP_004066 Entrez Gene 1407 Human Q16526
Background:	CRY1 is the blue light-dependent regulator of the circadian feedback loop. CRY1 inhibits CLOCK NPAS2-ARNTL E box-mediated transcription. CRY1 acts, in conjunction with CRY2, in maintaining period length and circadian rhythmicity. CRY1 has no photolyase activity. CRY1 is capable of translocating circadian clock core proteins such as PER proteins to the nucleus. CRY1 may inhibit CLOCK NPAS2-ARNTL transcriptional activity through stabilizing the unphosphorylated form of ARNTL.
Synonyms:	PHLL1



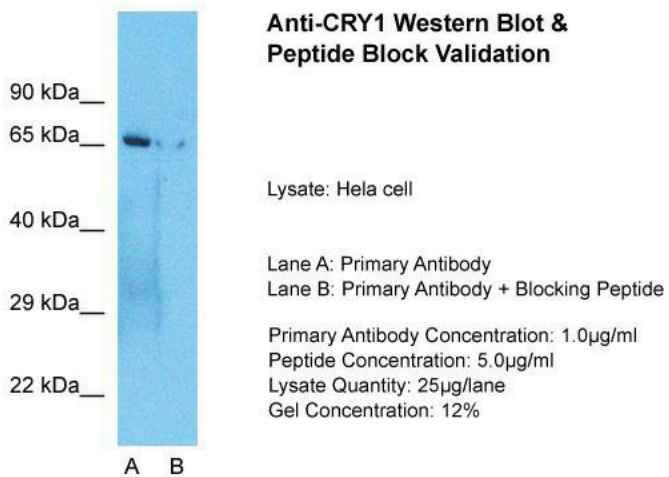
[View online »](#)

Note: Immunogen Sequence Homology: Dog: 100%; Pig: 100%; Rat: 100%; Horse: 100%; Human: 100%; Mouse: 100%; Sheep: 100%; Bovine: 100%; Guinea pig: 100%; Rabbit: 93%; Zebrafish: 93%

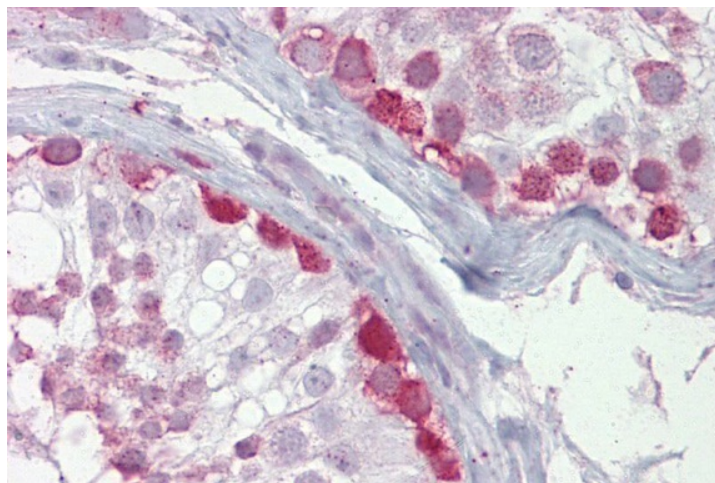
Protein Families: Druggable Genome

Protein Pathways: Circadian rhythm - mammal

Product images:



Host: Rabbit; Target Name: CRY1; Sample Tissue: HeLa Whole cell; Lane A: Primary Antibody; Lane B: Primary Antibody + Blocking Peptide ; Primary Antibody Concentration:1 ug/ml; Peptide Concentration: 5ug/ml; Lysate Quantity: 25ug/lane; Gel Concentration: 0.



Immunohistochemistry with Testis tissue at an antibody concentration of 5 ug/ml using anti-CRY1 antibody