

Product datasheet for **TA342727**

Calnexin (CANX) Rabbit Polyclonal Antibody

Product data:

Product Type:	Primary Antibodies
Applications:	WB
Recommended Dilution:	WB
Reactivity:	Human
Host:	Rabbit
Isotype:	IgG
Clonality:	Polyclonal
Immunogen:	The immunogen for anti-CANX antibody: synthetic peptide directed towards the middle region of human CANX. Synthetic peptide located within the following region: LVDQSVVNSGNLLNDMTPPVNPSREIEDPEDRKPEDWDERPKIPDPEAVK
Formulation:	Liquid. Purified antibody supplied in 1x PBS buffer with 0.09% (w/v) sodium azide and 2% sucrose. <i>Note that this product is shipped as lyophilized powder to China customers.</i>
Conjugation:	Unconjugated
Storage:	Store at -20°C as received.
Stability:	Stable for 12 months from date of receipt.
Predicted Protein Size:	65 kDa
Gene Name:	calnexin
Database Link:	NP_001737 Entrez Gene 821 Human P27824
Background:	This gene encodes a member of the calnexin family of molecular chaperones. The encoded protein is a calcium-binding, endoplasmic reticulum (ER)-associated protein that interacts transiently with newly synthesized N-linked glycoproteins, facilitating protein folding and assembly. It may also play a central role in the quality control of protein folding by retaining incorrectly folded protein subunits within the ER for degradation. Alternatively spliced transcript variants encoding the same protein have been described.
Synonyms:	CNX; IP90; P90



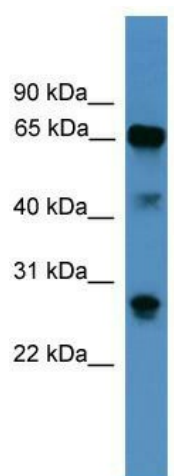
[View online »](#)

Note: Immunogen Sequence Homology: Pig: 100%; Rat: 100%; Human: 100%; Mouse: 100%; Bovine: 100%; Rabbit: 100%; Guinea pig: 100%; Dog: 93%; Horse: 93%; Zebrafish: 86%; Yeast: 80%; Goat: 79%

Protein Families: Druggable Genome, Transmembrane

Protein Pathways: Antigen processing and presentation

Product images:



WB Suggested Anti-CANX Antibody; Titration: 1.0 ug/ml; Positive Control: Fetal Liver