

Product datasheet for **TA342723**

Arrestin C (ARR3) Rabbit Polyclonal Antibody

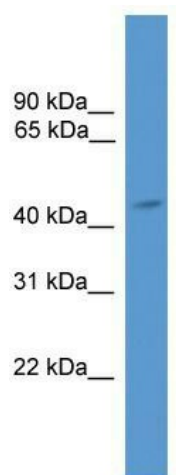
Product data:

Product Type:	Primary Antibodies
Applications:	WB
Recommended Dilution:	WB
Reactivity:	Human
Host:	Rabbit
Isotype:	IgG
Clonality:	Polyclonal
Immunogen:	The immunogen for anti-ARR3 antibody: synthetic peptide directed towards the middle region of human ARR3. Synthetic peptide located within the following region: EDAGKPCGIDFEVKSFCAENPEETVSKRDYVRLVVRKVQFAPPEAGPGPS
Formulation:	Liquid. Purified antibody supplied in 1x PBS buffer with 0.09% (w/v) sodium azide and 2% sucrose. <i>Note that this product is shipped as lyophilized powder to China customers.</i>
Conjugation:	Unconjugated
Storage:	Store at -20°C as received.
Stability:	Stable for 12 months from date of receipt.
Predicted Protein Size:	43 kDa
Gene Name:	arrestin 3 retinal (X-arrestin)
Database Link:	NP_004303 Entrez Gene 407 Human P36575
Background:	ARR3 may play a role in an as yet undefined retina-specific signal transduction. 'ARR3 could binds to photoactivated-phosphorylated red/green opsins.
Synonyms:	ARRX
Note:	Immunogen Sequence Homology: Human: 100%
Protein Families:	Druggable Genome



[View online »](#)

Product images:



WB Suggested Anti-ARR3 Antibody; Titration: 1.0 ug/ml; Positive Control: Fetal Brain