

Product datasheet for **TA342721**

ALDH3A1 Rabbit Polyclonal Antibody

Product data:

| | |
|-------------------------|--|
| Product Type: | Primary Antibodies |
| Applications: | IHC, WB |
| Recommended Dilution: | WB, IHC |
| Reactivity: | Human |
| Host: | Rabbit |
| Isotype: | IgG |
| Clonality: | Polyclonal |
| Immunogen: | The immunogen for anti-ALDH3A1 antibody: synthetic peptide directed towards the N terminal of human ALDH3A1. Synthetic peptide located within the following region: DLHKNEWNAYYEEVVYVLEEIEYMIQKLPEWAADEPVEKTPQTQQDELYI |
| Formulation: | Liquid. Purified antibody supplied in 1x PBS buffer with 0.09% (w/v) sodium azide and 2% sucrose. <i>Note that this product is shipped as lyophilized powder to China customers.</i> |
| Conjugation: | Unconjugated |
| Storage: | Store at -20°C as received. |
| Stability: | Stable for 12 months from date of receipt. |
| Predicted Protein Size: | 50 kDa |
| Gene Name: | aldehyde dehydrogenase 3 family member A1 |
| Database Link: | NP_000682 Entrez Gene 218 Human P30838 |
| Background: | Aldehyde dehydrogenases oxidize various aldehydes to the corresponding acids. They are involved in the detoxification of alcohol-derived acetaldehyde and in the metabolism of corticosteroids, biogenic amines, neurotransmitters, and lipid peroxidation. The enzyme encoded by this gene forms a cytoplasmic homodimer that preferentially oxidizes aromatic and medium-chain (6 carbons or more) saturated and unsaturated aldehyde substrates. It is thought to promote resistance to UV and 4-hydroxy-2-nonenal-induced oxidative damage in the cornea. The gene is located within the Smith-Magenis syndrome region on chromosome 17. Multiple alternatively spliced variants, encoding the same protein, have been identified. |



[View online »](#)

Synonyms: ALDH3; ALDHIII

Note: Immunogen Sequence Homology: Dog: 100%; Pig: 100%; Human: 100%; Guinea pig: 100%; Bovine: 93%; Rat: 79%

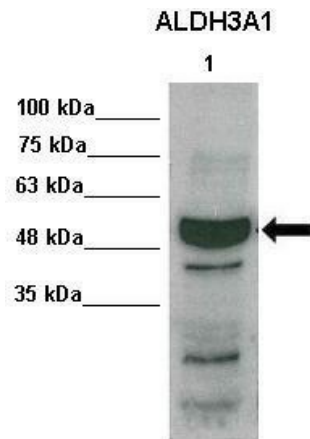
Protein Families: Druggable Genome

Protein Pathways: Drug metabolism - cytochrome P450, Glycolysis / Gluconeogenesis, Histidine metabolism, Metabolic pathways, Metabolism of xenobiotics by cytochrome P450, Phenylalanine metabolism, Tyrosine metabolism

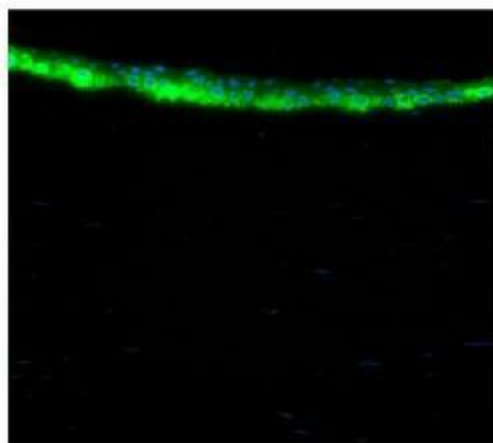
Product images:



ALDH3A1 antibody validated by WB using Fetal Muscle cell lysate at 1 ug/ml.



WB Suggested Anti-ALDH3A1 Antibody; Positive Control: Lane 1: 30ug human primary hepatocytes; Primary Antibody Dilution: 1:1000; Secondary Antibody: Anti-rabbit-HRP; Secondary Antibody Dilution: 1:5000; Submitted by: Takeshi Saito, USC Keck School of Medici



Sample Type: Human Cornea; Dilution: 1:200