

Product datasheet for **TA342710**

Olr806 Rabbit Polyclonal Antibody

Product data:

Product Type:	Primary Antibodies
Applications:	WB
Recommended Dilution:	WB
Reactivity:	Rat
Host:	Rabbit
Isotype:	IgG
Clonality:	Polyclonal
Immunogen:	The immunogen for anti-Olr806 antibody is: synthetic peptide directed towards the middle region of Rat Olr806. Synthetic peptide located within the following region: IISTILKIQSKEGRKKAFHTCASHLTVVALCYGMAIFTYIQPHSSPSVLQ
Formulation:	Liquid. Purified antibody supplied in 1x PBS buffer with 0.09% (w/v) sodium azide and 2% sucrose.
Purification:	Affinity Purified
Conjugation:	Unconjugated
Storage:	Store at -20°C as received.
Stability:	Stable for 12 months from date of receipt.
Predicted Protein Size:	34 kDa
Gene Name:	olfactory receptor 806
Database Link:	NP_001000976 Entrez Gene 405331 Rat
Background:	Olfactory receptors interact with odorant molecules in the nose, to initiate a neuronal response that triggers the perception of a smell. The olfactory receptor proteins are members of a large family of G-protein-coupled receptors (GPCR) arising from single coding-exon genes. Olfactory receptors share a 7-transmembrane domain structure with many neurotransmitter and hormone receptors and are responsible for the recognition and G protein-mediated transduction of odorant signals. The olfactory receptor gene family is the largest in the genome. The nomenclature assigned to the olfactory receptor genes and proteins for this organism is independent of other organisms.

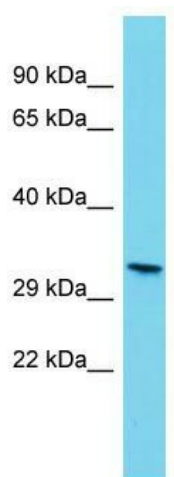


[View online »](#)

Synonyms: Olr806

Note: Immunogen Sequence Homology: Human: 100%; Dog: 93%; Pig: 93%; Rat: 93%; Mouse: 93%; Bovine: 93%; Rabbit: 93%; Guinea pig: 93%; Horse: 86%

Product images:



Host: Rabbit; Target Name: Olr806; Sample Tissue: Rat Pancreas lysates; Antibody Dilution: 1.0 ug/ml