

## Product datasheet for **TA342693**

### RERG Rabbit Polyclonal Antibody

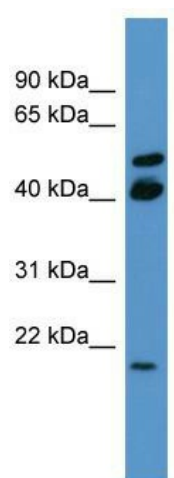
#### Product data:

|                         |   |
|-------------------------|---|
| Product Type:           | Primary Antibodies  |
| Applications:           | WB  |
| Recommended Dilution:   | WB  |
| Reactivity:             | Human   |
| Host:                   | Rabbit  |
| Isotype:                | IgG   |
| Clonality:              | Polyclonal  |
| Immunogen:              | The immunogen for anti-RERG antibody: synthetic peptide directed towards the C terminal of human RERG. Synthetic peptide located within the following region:<br>CAFYECSACTGEGNITEIFYELCREVRRRRMVQGKTRRRSSTTHVKQAIN |
| Formulation:            | Liquid. Purified antibody supplied in 1x PBS buffer with 0.09% (w/v) sodium azide and 2% sucrose.<br><i>Note that this product is shipped as lyophilized powder to China customers.</i>                             |
| Conjugation:            | Unconjugated  |
| Storage:                | Store at -20°C as received.   |
| Stability:              | Stable for 12 months from date of receipt.  |
| Predicted Protein Size: | 22 kDa  |
| Gene Name:              | RAS like estrogen regulated growth inhibitor  |
| Database Link:          | <a href="#">NP_116307</a><br><a href="#">Entrez Gene 85004 Human</a><br><a href="#">Q96A58</a>  |
| Background:             | RERG, a member of the RAS superfamily of GTPases, inhibits cell proliferation and tumor formation (Finlin et al., 2001 [PubMed 11533059]).  |
| Synonyms:               | MGC15754  |
| Note:                   | Immunogen Sequence Homology: Dog: 100%; Pig: 100%; Rat: 100%; Goat: 100%; Horse: 100%; Human: 100%; Mouse: 100%; Yeast: 100%; Bovine: 100%; Rabbit: 100%; Zebrafish: 100%; Guinea pig: 93%                          |
| Protein Families:       | Druggable Genome  |



[View online »](#)

## Product images:



WB Suggested Anti-RERG Antibody Titration: 0.2-1 ug/ml; ELISA Titer: 1:1562500; Positive Control: COLO205 cell lysate