

Product datasheet for **TA342692**

RASSF6 Rabbit Polyclonal Antibody

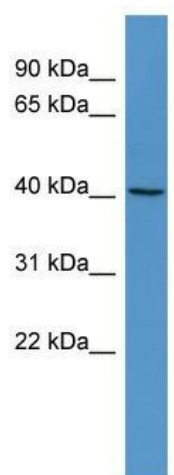
Product data:

Product Type:	Primary Antibodies
Applications:	WB
Recommended Dilution:	WB
Reactivity:	Human
Host:	Rabbit
Isotype:	IgG
Clonality:	Polyclonal
Immunogen:	The immunogen for anti-RASSF6 antibody: synthetic peptide directed towards the middle region of human RASSF6. Synthetic peptide located within the following region: FDDLRISELDRTQIPMSEKRNSQEDYLSYHSNTLKP HA KDEPDSPLYR
Formulation:	Liquid. Purified antibody supplied in 1x PBS buffer with 0.09% (w/v) sodium azide and 2% sucrose.
Conjugation:	Unconjugated
Storage:	Store at -20°C as received.
Stability:	Stable for 12 months from date of receipt.
Predicted Protein Size:	41 kDa
Gene Name:	Ras association domain family member 6
Database Link:	NP_958834 Entrez Gene 166824 Human Q6ZTQ3
Background:	RASSF6 is a member of the RAS association (RA) domain family of RAS effectors/tumor suppressors that mediate some of the growth inhibitory properties of RAS (see HRAS; MIM 190020) oncogenes (Eckfeld et al., 2004 [PubMed 15574778]).
Synonyms:	DKFZp686K23225
Note:	Immunogen Sequence Homology: Human: 100%



[View online »](#)

Product images:



WB Suggested Anti-RASSF6 Antibody Titration:
0.2-1 ug/ml; ELISA Titer: 1:1562500; Positive
Control: NCI-H226 cell lysate