

Product datasheet for **TA342691**

RAB8B Rabbit Polyclonal Antibody

Product data:

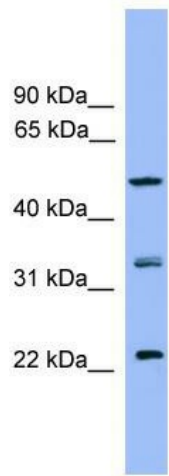
Product Type:	Primary Antibodies
Applications:	WB
Recommended Dilution:	WB
Reactivity:	Human, Mouse
Host:	Rabbit
Isotype:	IgG
Clonality:	Polyclonal
Immunogen:	The immunogen for anti-RAB8B antibody: synthetic peptide directed towards the C terminal of human RAB8B. Synthetic peptide located within the following region: SAKSSANVEEAFFTLARDIMTKLNRKMNDSNSAGAGGPVKITENRSKTS
Formulation:	Liquid. Purified antibody supplied in 1x PBS buffer with 0.09% (w/v) sodium azide and 2% sucrose. <i>Note that this product is shipped as lyophilized powder to China customers.</i>
Conjugation:	Unconjugated
Storage:	Store at -20°C as received.
Stability:	Stable for 12 months from date of receipt.
Predicted Protein Size:	23 kDa
Gene Name:	RAB8B, member RAS oncogene family
Database Link:	NP_057614 Entrez Gene 235442 Mouse Entrez Gene 51762 Human Q92930
Background:	RAB proteins, like RAB8B, are low molecular mass monomeric GTPases that localize on the cytoplasmic surfaces of distinct membrane-bound organelles. RAB proteins function in intracellular vesicle transport by aiding in the docking and/or fusion of vesicles with their target membranes (summary by Chen et al., 1997 [PubMed 9030196]).
Synonyms:	FLJ38125
Note:	Immunogen Sequence Homology: Human: 100%; Pig: 93%; Rat: 93%; Horse: 93%; Mouse: 93%; Bovine: 93%; Rabbit: 93%; Guinea pig: 93%; Dog: 86%



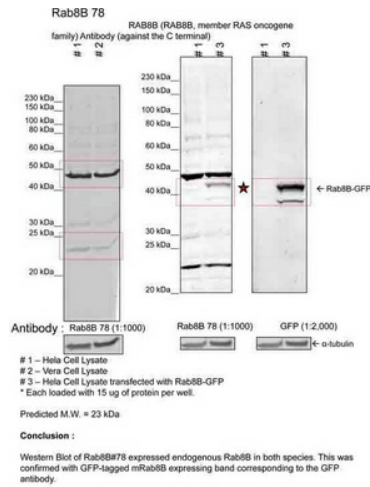
[View online »](#)

Protein Families: Druggable Genome

Product images:



RAB8B antibody validated by WB using HepG2 cell lysate at 1 ug/ml.



Sample Type: 1. Human Cervical Cancer Cell Lysate (15ug); 2. Monkey Fibroblast Cell Lysate (15ug); 3. Human Cervical Cancer Cell transfected with mouse Rab8B-GFP (15ug); Primary Dilution: 1:1000; Secondary Antibody: goat anti-Rabbit; Secondary Dilution: 1