

## Product datasheet for **TA342690**

### **RAB8B Rabbit Polyclonal Antibody**

#### **Product data:**

Product Type:	Primary Antibodies
Applications:	WB
Recommended Dilution:	WB
Reactivity:	Human, Mouse
Host:	Rabbit
Isotype:	IgG
Clonality:	Polyclonal
Immunogen:	The immunogen for anti-RAB8B antibody: synthetic peptide directed towards the C terminal of human RAB8B. Synthetic peptide located within the following region: RNIEEHASSDVERMILGNKCDMNDKRQVSKERGEKLAIYGIKFLLETSK
Formulation:	Liquid. Purified antibody supplied in 1x PBS buffer with 0.09% (w/v) sodium azide and 2% sucrose. <i>Note that this product is shipped as lyophilized powder to China customers.</i>
Conjugation:	Unconjugated
Storage:	Store at -20°C as received.
Stability:	Stable for 12 months from date of receipt.
Predicted Protein Size:	23 kDa
Gene Name:	RAB8B, member RAS oncogene family
Database Link:	<a href="#">NP_057614</a> <a href="#">Entrez Gene 235442 Mouse</a> <a href="#">Entrez Gene 51762 Human</a> <a href="#">Q92930</a>
Background:	RAB proteins, like RAB8B, are low molecular mass monomeric GTPases that localize on the cytoplasmic surfaces of distinct membrane-bound organelles. RAB proteins function in intracellular vesicle transport by aiding in the docking and/or fusion of vesicles with their target membranes (summary by Chen et al., 1997 [PubMed 9030196]).
Synonyms:	FLJ38125

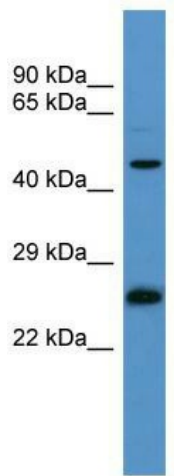


[View online »](#)

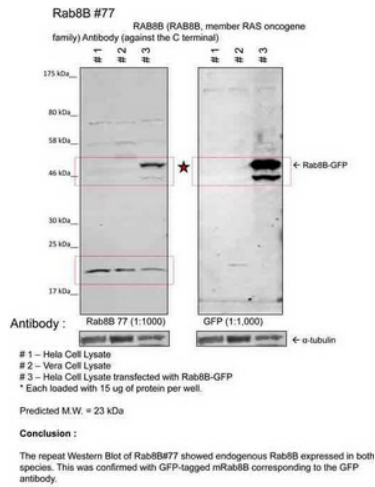
**Note:** Immunogen Sequence Homology: Dog: 100%; Pig: 100%; Rat: 100%; Horse: 100%; Human: 100%; Mouse: 100%; Bovine: 100%; Rabbit: 100%; Zebrafish: 100%; Guinea pig: 100%; Goat: 93%; Sheep: 93%

**Protein Families:** Druggable Genome

**Product images:**



WB Suggested Anti-RAB8B Antibody Titration: 0.2-1 ug/ml; ELISA Titer: 1:312500; Positive Control: COLO205 cell lysate



Sample Type: 1. Human Cervical Cancer Cell Lysate (15ug); 2. Monkey Fibroblast Cell Lysate (15ug); 3. Human Cervical Cancer Cell transfected with mouse Rab8B-GFP (15ug); Primary Dilution: 1:1000; Secondary Antibody: goat anti-Rabbit; Secondary Dilution: 1