

Product datasheet for **TA342689**

NORE1 (RASSF5) Rabbit Polyclonal Antibody

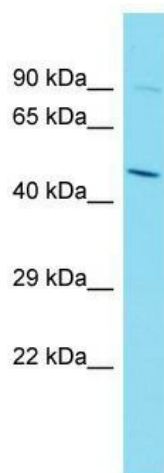
Product data:

Product Type:	Primary Antibodies
Applications:	WB
Recommended Dilution:	WB
Reactivity:	Mouse
Host:	Rabbit
Isotype:	IgG
Clonality:	Polyclonal
Immunogen:	The immunogen for anti-Rassf5 antibody is: synthetic peptide directed towards the C-terminal region of Mouse Rassf5. Synthetic peptide located within the following region: SFVLKENETGEVEWDAFSIPELQNFLTILEKEEQDKIHQLQKKYNKFRQK
Formulation:	Liquid. Purified antibody supplied in 1x PBS buffer with 0.09% (w/v) sodium azide and 2% sucrose. <i>Note that this product is shipped as lyophilized powder to China customers.</i>
Conjugation:	Unconjugated
Storage:	Store at -20°C as received.
Stability:	Stable for 12 months from date of receipt.
Predicted Protein Size:	47 kDa
Gene Name:	Ras association domain family member 5
Database Link:	NP_872604 Entrez Gene 54354 Mouse Q8WWWW0
Background:	Rassf5 is a potential tumor suppressor. It seems to be involved in lymphocyte adhesion by linking RAP1A activation upon T-cell receptor or chemokine stimulation to integrin activation. Isoform 2 stimulates lymphocyte polarization and the patch-like distribution of ITGAL/LFA-1, resulting in an enhanced adhesion to ICAM1. Together with RAP1A may participate in regulation of microtubule growth. The association of isoform 2 with activated RAP1A is required for directional movement of endothelial cells during wound healing. It may be involved in regulation of Ras apoptotic function. The RASSF5-STK4/MST1 complex may mediate HRAS1 and KRAS induced apoptosis.



[View online »](#)

Synonyms:	Maxp1; NORE1; NORE1A; NORE1B; RAPL; RASSF3
Note:	Immunogen Sequence Homology: Dog: 100%; Pig: 100%; Human: 100%; Rabbit: 100%; Guinea pig: 100%; Horse: 93%; Bovine: 93%; Rat: 92%; Mouse: 86%
Protein Families:	Druggable Genome
Protein Pathways:	Leukocyte transendothelial migration, Non-small cell lung cancer, Pathways in cancer

Product images:

Host: Rabbit; Target Name: Rassf5; Sample Tissue: Mouse Spleen lysates; Antibody Dilution: 1.0 ug/ml