

## Product datasheet for **TA342688**

### GEF H1 (ARHGEF2) Rabbit Polyclonal Antibody

#### Product data:

Product Type:	Primary Antibodies
Applications:	WB
Recommended Dilution:	WB
Reactivity:	Human
Host:	Rabbit
Isotype:	IgG
Clonality:	Polyclonal
Immunogen:	The immunogen for anti-ARHGEF2 antibody: synthetic peptide directed towards the C terminal of human ARHGEF2. Synthetic peptide located within the following region: NTSPGVTANGEARTFNNGSIELCRADSDSSQRDRNGNQLRSPQEEALQRLV
Formulation:	Liquid. Purified antibody supplied in 1x PBS buffer with 0.09% (w/v) sodium azide and 2% sucrose. <i>Note that this product is shipped as lyophilized powder to China customers.</i>
Conjugation:	Unconjugated
Storage:	Store at -20°C as received.
Stability:	Stable for 12 months from date of receipt.
Predicted Protein Size:	111 kDa
Gene Name:	Rho/Rac guanine nucleotide exchange factor 2
Database Link:	<a href="#">NP_001155855</a> <a href="#">Entrez Gene 9181 Human Q92974</a>
Background:	Rho GTPases play a fundamental role in numerous cellular processes that are initiated by extracellular stimuli that work through G protein coupled receptors. The encoded protein may form complex with G proteins and stimulate rho-dependent signals. Alternatively spliced transcript variants encoding different isoforms have been identified.
Synonyms:	GEF; GEF-H1; GEFH1; LFP40; P40
Note:	Immunogen Sequence Homology: Human: 100%; Pig: 93%; Rat: 93%; Horse: 93%; Mouse: 93%; Bovine: 93%; Rabbit: 93%; Dog: 86%; Guinea pig: 86%

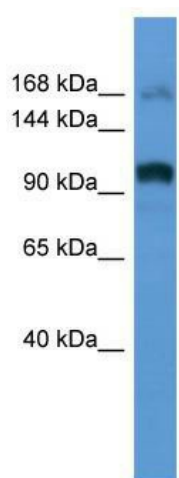


[View online »](#)

Protein Families: Druggable Genome

Protein Pathways: Pathogenic Escherichia coli infection

### Product images:



WB Suggested Anti-ARHGEF2 Antibody Titration:  
0.2-1 ug/ml; ELISA Titer: 1:1562500; Positive  
Control: Human Placenta