

## Product datasheet for **TA342686**

### STARD8 Rabbit Polyclonal Antibody

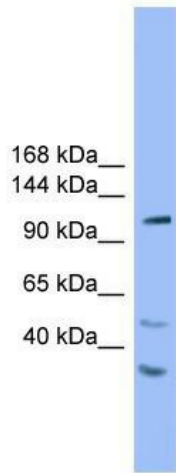
#### Product data:

Product Type:	Primary Antibodies
Applications:	WB
Recommended Dilution:	WB
Reactivity:	Human
Host:	Rabbit
Isotype:	IgG
Clonality:	Polyclonal
Immunogen:	The immunogen for anti-STARD8 antibody: synthetic peptide directed towards the N terminal of human STARD8. Synthetic peptide located within the following region: KKRHRNRSFLKHLESLRRKEKSGSQQAEPKHSPATSEKVKASSFRSCRG
Formulation:	Liquid. Purified antibody supplied in 1x PBS buffer with 0.09% (w/v) sodium azide and 2% sucrose.
Conjugation:	Unconjugated
Storage:	Store at -20°C as received.
Stability:	Stable for 12 months from date of receipt.
Predicted Protein Size:	122 kDa
Gene Name:	StAR related lipid transfer domain containing 8
Database Link:	<a href="#">NP_001135975</a> <a href="#">Entrez Gene 9754 Human</a> <a href="#">Q92502</a>
Background:	This gene encodes a member of a subfamily of Rho GTPase activating proteins that contain a steroidogenic acute regulatory protein related lipid transfer domain. The encoded protein localizes to focal adhesions and may be involved in regulating cell morphology. This protein may also function as a tumor suppressor.
Synonyms:	ARHGAP38; DLC3; STARTGAP3
Note:	Immunogen Sequence Homology: Human: 100%

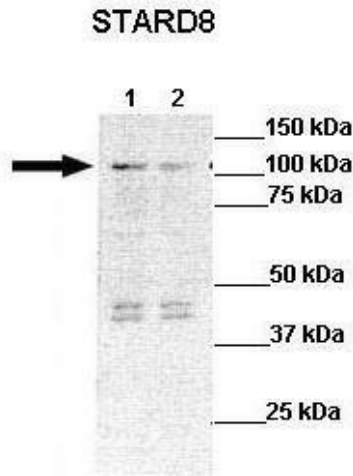


[View online »](#)

Product images:



WB Suggested Anti-STARD8 Antibody; Titration: 1.0 ug/ml; Positive Control: 293T Whole Cell



Lanes: Lane 1: 30ug STARD8 transfected HEK293T lysate; Lane 2: 30ug HEK293T lysate; Primary Antibody Dilution: 1:1000; Secondary Antibody: Anti-rabbit-HRP Anti-rabbit-HRP; Secondary Antibody Dilution: 1:10,000; Gene Name: STARD8; Submitted by: Dr Frankie